

Tel: (+960) 301 3362
(+960) 301 3379
E-mail: aishq@macl.aero
AFTN: VRMMYNYX

REPUBLIC OF MALDIVES

AERONAUTICAL INFORMATION SERVICE
AIR TRAFFIC SERVICES
MALDIVES AIRPORTS COMPANY LIMITED
Ibrahim Nasir International Airport
Hulhule' 22000
Republic of Maldives

AIP
SUPPLEMENT
01/12
22 FEB 2012

VILLA AIRPORT MAAMIGILI

PURPOSE

The purpose of this AIP Supplement is to notify the aviation industry about the opening of Villa Airport Maamigili for regular domestic Air Transport Operations.

CANCELLATION

Cancel AIC 07/11 dated 23 October 2011

VALIDITY

AIP Supplement will remain current until the information incorporated into AIP

PART 3 – AERODROME

AD 1. AERODROMES/HELIPORTS

AD 1.3 INDEX TO AERODROMES AND HELIPORTS

AD 2. AERDROMES

VRMV AD 2.1 AERODROME LOCATION INDICATOR AND NAME

VRMV AD 2.2 AERODROME GEOGRAPHICAL AND ADMINISTRATIVE DATA

VRMV AD 2.3 OPERATIONAL HOURS

VRMV AD 2.4 HANDLING SERVICES AND FACILITIES

VRMV AD 2.5 PASSENGER FACILITIES

VRMV AD 2.6 RESCUE AND FIREFIGHTING SERVICES

VRMV AD 2.7 SEASONAL AVAILABILITY - CLEARING

VRMV AD 2.8 APRONS, TAXIWAYS AND CHECK LOCATIONS DATA

VRMV AD 2.9 SURFACE MOVEMENT GUIDANCE AND CONTROL SYSTEM
MARKINGS

VRMV AD 2.10 AERODROME OBSTACLE

VRMV AD 2.11 METEOROLOGICAL INFORMATION PROVIDED

VRMV AD 2.12 RUNWAY PHYSICAL CHARACTERISTICS

VRMV AD 2.13 DECLARED DISTANCE

VRMV AD 2.14 APPROACH AND RUNWAY LIGHTING

VRMV AD 2.15 OTHER LIGHTING, SECONDARY POWER SUPPLY

VRMV AD 2.16 HELICOPTER LANDING AREA

VRMV AD 2.17 ATS AIRSPACE

VRMV AD 2.18 ATS COMMUNICATION FACILITIES

VRMV AD 2.19 RADIO NAVIGATION AND LANDING AIDS

VRMV AD 2.20 LOCAL TRAFFIC REGULATIONS

VRMV AD 2.21 NOISE ABATEMENT PROCEDURE

VRMV AD 2.22 FLIGHT PROCEDURES

VRMV AD 2.23 ADDITIONAL INFORMATION

VRMV AD 2.24 CHARTS RELATED TO VILLA AIRPORT MAAMIGILI

AERODROME CHART

Instrument Approach Chart - RWY 09

Instrument Approach Chart - RWY 27

AD1.3 INDEX TO AERODROMES AND HELIPORTS

Aerodrome/heliport name Location indicator	Type of traffic permitted to use the aerodrome/heliport			Reference to AD Section and Remarks
	International – National (INTL – NTL)	IFR - VFR	S= Scheduled NS = Non scheduled P = Private	
1	2	3	4	5
Aerodromes GAN ISLAND/ Gan International VRMG	INTL - NTL	IFR - VFR	S – NS – P	AD 2 - VRMG
HANIMAADHOO ISLAND/Hanimaadhoo VRMH	NTL	IFR – VFR	S – NS – P	AD 2 - VRMH
KAADEDHDOO ISLAND/Kaadedhdhoo VRMT	NTL	IFR – VFR	S – NS – P	AD 2 - VRMT
KADHDOO ISLAND/Kadhdoos VRMK	NTL	IFR – VFR	S – NS – P	AD 2 - VRMK
HULHULE ISLAND/Ibrahim Nasir International VRMM	INTL - NTL	IFR – VFR	S – NS – P	AD 2 - VRMM
MAAMIGILI ISLAND/ Villa airport Maamigili VRMV	NTL	IFR – VFR	S – NS – P	AD 2 - VRMV

2.1 Aerodrome Location Indicator and Name

VRMV – VILLA AIRPORT MAAMIGILI

2.2 Aerodrome Geographical And Administrative Data

1	<i>ARP coordinates and site at AD</i>	032814N0725043E RWY MID POINT
2	<i>Direction and distance from City</i>	010°210M North Maamigili
3	<i>Elevation / Reference temperature</i>	1.73 M (6 FT) / 31.7°C
4	<i>MAG VAR/Annual change</i>	3.5° W(2010)/Nil
5	<i>AD Operator</i> <i>Address</i> <i>Telephone</i> <i>E- mail Address</i>	Villa Air Pvt. Ltd Villa Airport Maamigili Maamigili Island South Ari Atoll Republic of Maldives Tel: (+960) 333 3355 E-mail: villairports@flyvilla.mv
6	<i>Types of traffic permitted (IFR/VFR)</i>	IFR/VFR
7	<i>Remarks</i>	Nil

2.3 Operational Hours

1	<i>AD Administration</i>	0000 – 2000 Hours
2	<i>Customs and Immigration</i>	Nil
3	<i>Health and sanitation</i>	Maamigili Health Centre
4	<i>AIS Briefing office</i>	Nil
5	<i>ATS Reporting Office (ARO)</i>	Nil
6	<i>Met Briefing Office</i>	Nil
7	<i>ATS</i>	HO
8	<i>Fuelling</i>	Nil
9	<i>Handling</i>	Nil
10	<i>Security</i>	HO
11	<i>De-icing</i>	Not Applicable
12	<i>Remarks</i>	Nil

2.4 Handling Services and Facilities

1	<i>Cargo handling facilities</i>	Equipped to handle aircraft ranging from light to medium
2	<i>Fuel/oil types</i>	Nil
3	<i>Fuelling facilities/capacity</i>	Nil
4	<i>De- icing facilities</i>	Not Applicable
5	<i>Hanger space available for visiting aircraft</i>	yes
6	<i>Repair facilities for visiting aircraft</i>	Fully equipped for ATR42 repair
7	<i>Remarks</i>	Nil

2.5 Passenger Facilities

1	<i>Hotels</i>	Holiday and Sun Island resort
2	<i>Restaurants</i>	Nil
3	<i>Transportation</i>	By Bus Dhoani and speed boat
4	<i>Medical facilities</i>	Medical facility available in Sun Island and Holiday Island resort
5	<i>Bank/post</i>	State Bank of India Maamigili Branch
6	<i>Tourist Office</i>	Nil
7	<i>Remarks</i>	Nil

2.6 Rescue and Fire- Fighting Services

1	<i>AD category for fire fighting</i>	CAT 5
2	<i>Rescue equipment</i>	Adequately provided as recommended by ICAO
3	<i>Capabilities for removal of disabled aircraft</i>	No specific equipment (crane, forklift, bulldozer, etc) available
4	<i>Remarks</i>	Nil

2.7 Seasonal Availability – Clearing

1	<i>Types of clearing equipment</i>	Nil
2	<i>Clearance priorities</i>	Nil
3	<i>Remarks</i>	AD serviceable right throughout the year

2.8 Aprons, Taxiways and Check Locations Data

1	<i>Apron surface and strength</i>	Surface: Asphalt Strength: PCN15/FA/X/T
2	<i>Taxiway width, surface and strength</i>	Width: 15 M Surface: Asphalt Strength: PCN15/F/A/X/T
3	<i>ACL location and elevation</i>	Location: Runway mid-point Elevation: 1.62 M / 5 FT
4	<i>VOR/INS checkpoint</i>	VOR: Nil INS: Nil
5	<i>remarks</i>	Nil

2.9 Surface Movement Guidance and Control System and Markings

1	<i>Use of aircraft stand ID signs, TWY guide lines and visual docking/parking guidance system of aircraft stands</i>	Not applicable
2	<i>RWY/TWY markings and LGT</i>	RWY: Designation, THR, TDZ and side stripe markings, Edge lights, THR and End lights TWY: centre line, holding position markings on both taxiways Edge lights on all taxiways
3	<i>Stop bars</i>	Nil
4	<i>Remarks</i>	Nil

2.10 Aerodrome Obstacles

<i>In approach/TKOF areas</i>			<i>In circling area and at AD</i>		<i>Remarks</i>
1			2		3
<i>RWY/Area affected</i>	<i>Obstacle type elevation markings/LGT</i>	<i>Coordinates</i>	<i>Obstacle type elevation markings/LGT</i>	<i>coordinates</i>	
<i>a</i>	<i>b</i>	<i>c</i>	<i>a</i>	<i>b</i>	
			Wataniyya Tower 30 M	032839.90N 0725017.10E	

2.11 Meteorological Information Provided

1	<i>Associated MET Office</i>	Nil
2	<i>Hours of Service</i> <i>MET Office outside hours</i>	Nil Nil
3	<i>Office responsible for TAF preparation</i> <i>Periods of validity</i>	Nil Nil
4	<i>Type of landing forecast</i> <i>Interval of issuance</i>	Nil Nil
5	<i>Briefing /consultation provided</i>	Nil
6	<i>Flight documentation</i> <i>Language(s) used</i>	Nil
7	<i>Charts and other INFO AVBL</i>	Nil
8	<i>Supplementary EQPT AVBL for INFO for briefing or consultation</i>	ATIS
9	<i>ATS Units Provided with information</i>	Maamigili TWR Male' TWR
10	<i>Additional Information</i>	Nil

2.12 Runway Physical Characteristics

<i>Designation RWY NR</i>	<i>True & MAG BRG</i>	<i>Dimensions of RWY (M)</i>	<i>Strength (PCN) And surface of RWY and SWY</i>	<i>THR coordinates</i>	<i>THR elevation and highest elevation of TDZ of precision APP RWY</i>
1	2	3	4	5	6
09	089° GEO 086° MAG	1800 x 30	PCN15/F/A/X/T Asphalt	032812N 0724935E	THR 2.11 M / 6.9 FT
27	266° GEO 269° MAG	1800 x 30		032816N 0725033E	THR 2.10 M / 6.8 FT

<i>Slope of RWY - SWY</i>	<i>SWY dimensions</i>	<i>CWY dimensions</i>	<i>Strip dimensions</i>	<i>OFZ</i>	<i>Remarks</i>
7	8	9	10	11	12
0%	Nil	300X150	1920X150	Nil	Nil
0%	Nil	300X150	1920X150	Nil	Nil

2.13 Declared Distances

<i>RWY</i>	<i>TORA(M)</i>	<i>TODA(M)</i>	<i>ASDA(M)</i>	<i>LDA(M)</i>	<i>Remarks</i>
1	2	3	4	5	6
09	1800	2100	1800	1800	Nil
27	1800	2100	1800	1800	Nil

2.14 Approach and Runway Lighting

<i>RWY Designator</i>	<i>APP LGT type LEN INTST</i>	<i>THR LGT colour WBAR</i>	<i>VASIS (MEHT) PAPI</i>	<i>TDZ LGT LEN</i>	<i>RWY centre line LGT Length spacing colour INTST</i>	<i>RWY edge LGT LEN spacing colour INTST</i>	<i>RWY End LGT Colour WBA R</i>	<i>SWY LGT LEN (M) colour</i>	<i>Remark</i>
1	2	3	4	5	6	7	8	9	10
09	Nil	Green No	APAPI 3°40'	Nil	Nil	1800M 60M White	Red -	15M Blue	Nil
27		Green No	APAPI 3°40'	Nil	Nil	1800M 60M White	Red -	15M Blue	Nil

2.15 Other Lighting, Secondary Power Supply

1	<i>ABN/IBN location characteristics and hours of operation</i>	On top of control Tower, ALTN W/G EV MIN/ IBN: Nil, HN
2	<i>LDI location and LGT Anemometer location and LGT</i>	LDI: Nil Anemometer: On top of control tower
3	<i>TWY edge and centre line lighting</i>	Edge TWY A,B Centre Line: Nil
4	<i>Secondary power supply /switch-overtime</i>	Secondary power supply to all lighting on RWY/ Switch- overtime: 15 seconds
5	<i>Remarks</i>	Nil

2.16 Helicopter Landing Areas

Nil

2.17 ATS Airspace

1	<i>Designation and lateral limits</i>	MAAMIGILI CTR Airspace bounded by the following: 033507N 723117E, 032957N 724522E, thence along a 5NM radius arc centred on 032814N 725004E (RWY MID POINT) to 033258N 725147E, thence to 034707N 725655E, thence along a 20NM radius arc centred on 032814N 725004E (RWY MID POINT) to 031811N 730723E, thence to 032544N 725424E, thence along a 5NM radius arc centred on 032814N 725004E (RWY MID POINT) to 032544N 724545E, thence to 031811N 723245E, thence along a 20NM radius arc centred on 032814N 725004E (RWY MID POINT) to 33507N 723117
2	<i>Vertical limits</i>	SFC to 3 500 FT MSL
3	<i>Airspace classification</i>	D
4	<i>ATS Units Language(s)</i>	Maamigili Tower English
5	<i>Transition Altitude</i>	11 000 FT
6	<i>Remarks</i>	Nil

2.18 ATS Communication Facilities

<i>Services Designation</i>	<i>Call sign</i>	<i>Frequency</i>	<i>Hours of operation</i>	<i>Remarks</i>
1	2	3	4	5
TWR	Maamigili Tower	118.9 MHZ	HO	Primary frequency Emergency Frequency Frequency SMC Frequency
ATIS	Maamigili Information	125.6 MHZ	HO	

2.19 Radio Navigation and Landing Aids

Nil

2.20 Local Traffic Regulations

Nil

2.21 Noise Abatement Procedure

Nil

2.22 Flight Procedures

Aerodrome Traffic Circuit

- RWY 27 - standard traffic circuit and all turns shall be made to left
- RWY 09 – non-standard circuit and all turns shall be made to the right

When Maamigili Tower is operational VFR and IFR within Mamilgili CTR are subject to ATS.

When Maamigili Tower is NOT in operation VFR operating within Maamigili CTR shall maintain continuous listening watch and transmit position information on TIBA frequency 128.9MHz.

During seaplane taxiing and landing/take-off pilot in command is responsible to avoid obstacles on water.

2.23 Additional Information

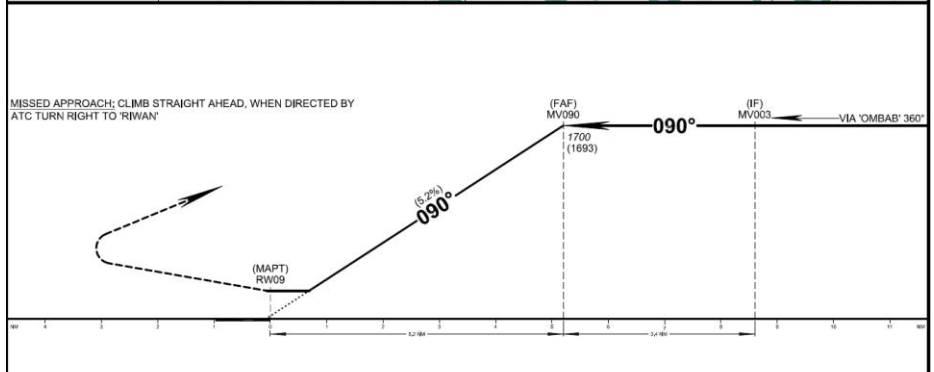
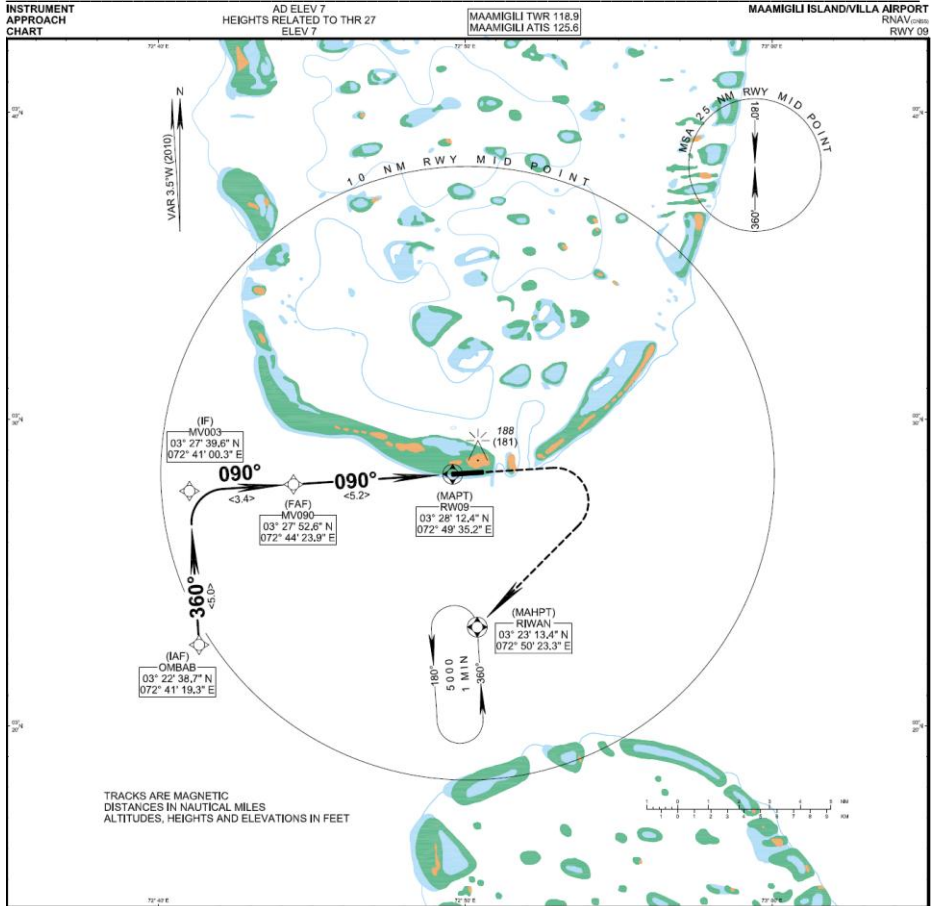
Nil

2.24 Charts related to Aerodrome

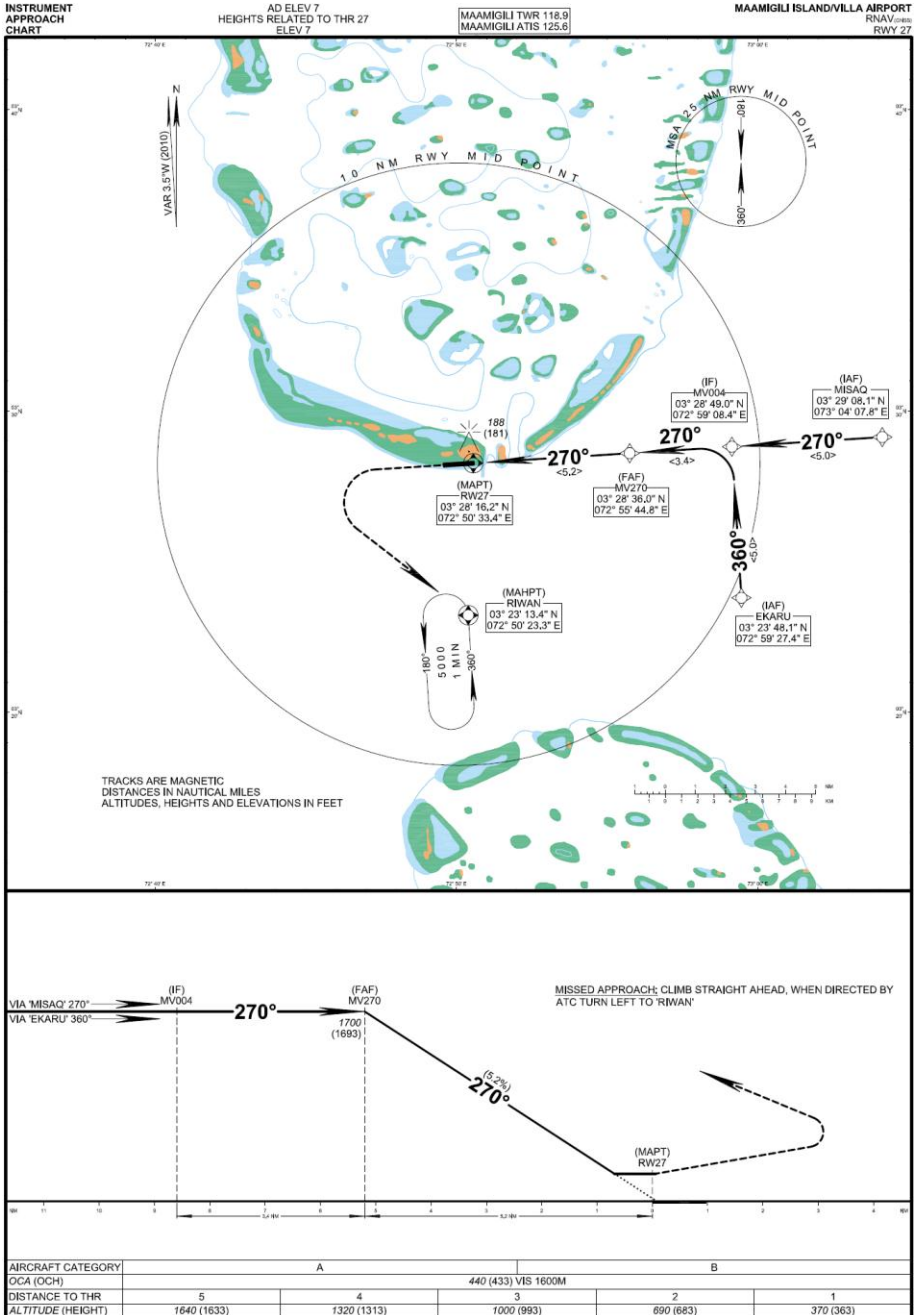
Aerodrome chart

Instrument Approach Chart RWY 09

Instrument Approach Chart RWY 27



AIRCRAFT CATEGORY	A			B	
OCA (OCH)	440 (433) VIS 1600M				
DISTANCE TO THR	5	4	3	2	1
ALTITUDE (HEIGHT)	1640 (1633)	1320 (1313)	1000 (993)	690 (683)	370 (363)

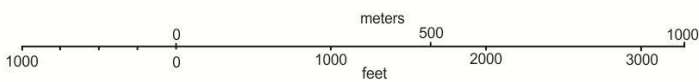
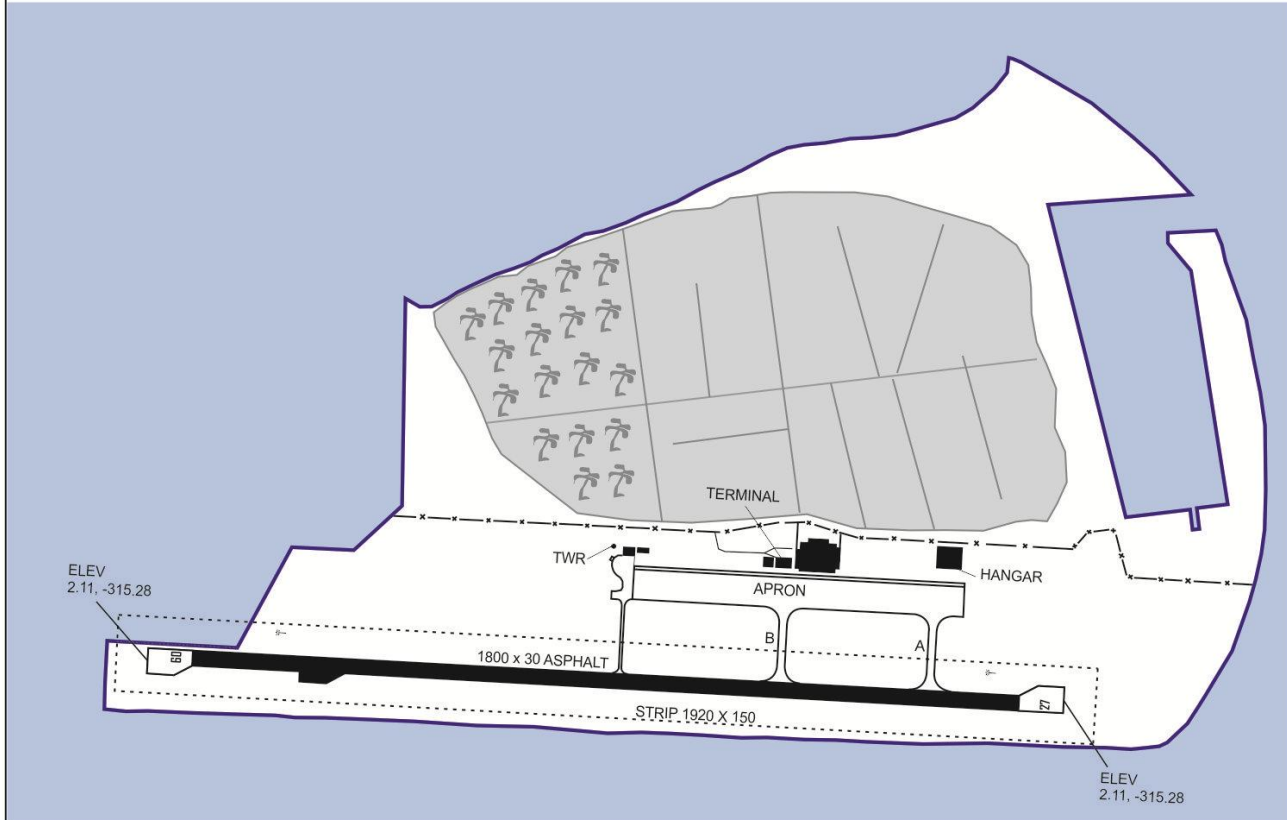


AERODROME CHART 03° 28' 14" E TWR 118.9 MAAMIGILI / VILLA AIRPORT
72° 50' 43" E

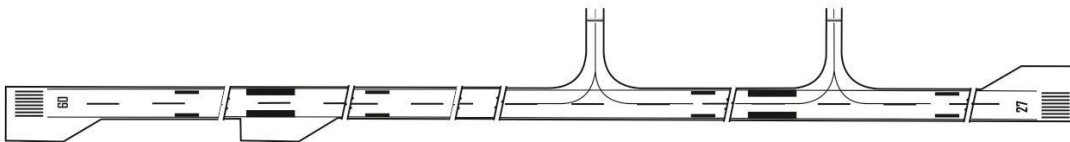
RWY	DIRECTION	THR	BEARING STRENGTH
09	093°	03° 28' 12" N 72° 49' 36" E	PCN15/F/A/X/T
27	267°	03° 26' 16" N 72° 50' 53" E	PCN15/F/A/X/T

ELEVATIONS AND DIMENSIONS IN METERS
BEARINGS ARE MAGNETIC

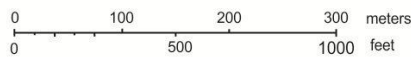
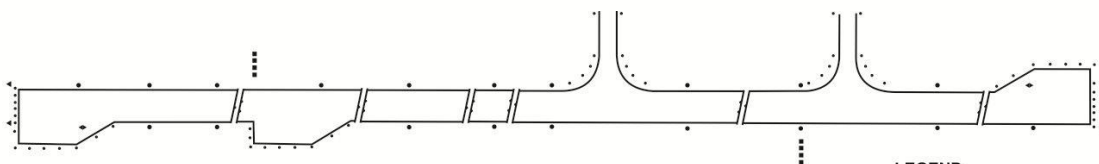
↑
VAR 3 28' W 2012
ANNUAL RATE
OF CHANGE 2'



MARKING AIDS RWY 09/27 AND EXIT TWY



LIGHTING AIDS RWY 09/27 AND EXIT TWY



LEGEND

■	UNI DIRECTIONAL LIGHT
•	BI DIRECTIONAL LIGHT
●	OMNI DIRECTIONAL LIGHT
▶	CAPACITOR DISCHARGE LIGHT