

AD 2 AERODROMES**VRMT AD 2.1 Aerodrome location indicator and name****VRMT - KAADEDHDHOO ISLAND/Kaadedhdhoo****VRMT AD 2.2 Aerodrome geographical and administrative data**

1	<i>ARP coordinates and site at AD</i>	002918N 0725946E Centre of apron
2	<i>Direction and distance from City</i>	004° 3.7 KM from Thinadhoo
3	<i>Elevation / Reference temperature</i>	0.61 M (2 FT) / 30.3°C
4	<i>MAG VAR/Annual change</i>	4.8° W (1995)
5	<i>AD Operator</i> <i>Address</i> <i>Telephone</i> <i>Fax</i>	Regional Airports Ministry of Transport and Communications Republic of Maldives Tel: (960) 330 7344 Telefax: (960) 332 0911
	<i>Types of traffic permitted (IFR/VFR)</i>	IFR / VFR
7	<i>Remarks</i>	Nil.

VRMT AD 2.3 Operational hours

1	<i>AD Operator</i>	0230 - 0930
2	<i>Customs and immigration</i>	Nil
3	<i>Health and sanitation</i>	Nil
4	<i>AIS Briefing Office</i>	Nil
5	<i>ATS Reporting Office (ARO)</i>	Nil
6	<i>MET Briefing Office</i>	Nil
7	<i>ATS</i>	HO
8	<i>Fuelling</i>	HO
9	<i>Handling</i>	Nil
10	<i>Security</i>	HO
11	<i>De-icing</i>	Nil
12	<i>Remarks</i>	Aerodrome not available for night operations

VRMT AD 2.4 Handling services and facilities

1	<i>Cargo handling facilities</i>	Nil
2	<i>Fuel/oil types</i>	Jet A-1
3	<i>Fuelling facilities/capacity</i>	Fixed hose system/13000L ts
4	<i>De-icing facilities</i>	Nil
5	<i>Hanger space available for visiting aircraft</i>	Nil
6	<i>Repair facilities for visiting aircraft</i>	Nil
7	<i>Remarks</i>	Nil

VRMT AD 2.5 Passenger facilities

1	<i>Hotels</i>	Nil
2	<i>Restaurants</i>	At AD
3	<i>Transportation</i>	Launches and Dhonis, can be hired from airport
4	<i>Medical facilities</i>	First Aid at AD - Nil
5	<i>Bank/Post</i>	Nil
6	<i>Tourist Office</i>	Nil
7	<i>Remarks</i>	Nil

VRMT AD 2.6 Rescue and fire fighting services

1	<i>AD category for fire fighting</i>	CAT 4
2	<i>Rescue equipment</i>	All equipment required for CAT 4 available
3	<i>Capability for removal of disabled aircraft</i>	Nil
4	<i>Remarks</i>	Fire fighting service available; HO

VRMT AD 2.7 Seasonal availability - clearing

1	<i>Types of clearing equipment</i>	Not Applicable
2	<i>Clearance priorities</i>	Nil
3	<i>Remarks</i>	AD service right throughout the year

VRMT AD 2.8 Aprons, taxiways and check locations data

1	<i>Apron surface and strength</i>	Surface: Bituminous Strength: PCN 15
2	<i>Taxiway width, surface and strength</i>	Width: 14.33 M Surface: Bituminous Strength: PCN 15
	<i>ACL location and elevation</i>	Location: Runway mid-point Elevation: 0.61 M / 2 FT
4	<i>VOR/INS Checkpoint</i>	VOR: Nil INS: Nil
5	<i>Remarks</i>	Nil

VRMT AD 2.9 Surface movement guidance and control system and markings

1	<i>Use of aircraft stand ID signs, TWY guide lines and visual docking/parking guidance system of aircraft stands</i>	Nil
2	<i>RWY/TWY markings and LGT</i>	RWY: Designation, Centreline and THR markings TWY: Nil
3	<i>Stop bars</i>	Nil
4	<i>Remarks</i>	Nil

VRMT AD 2.10 Aerodrome obstacles

<i>In approach/TKOF areas</i>			<i>In circling area and at AD</i>		<i>Remarks</i>
1			2		
<i>RWY/Area affected</i>	<i>Obstacle type elevation markings / LGT</i>	<i>Coordinates</i>	<i>Obstacle type elevation markings / LGT</i>	<i>Coordinates</i>	
<i>a</i>	<i>b</i>	<i>c</i>	<i>a</i>	<i>b</i>	
			Hoadedhoo Dhiraagu Antenna 30M	00 26 33.7 N 073 00 15.1E	
			Madaveli Wataniyya Antenna 40M	00 27 26.8N 072 59 56.0E	
			Kaadedhoo Dhiraagu Antenna 21 M	00 29 40.5 N 072 59 46.3E	
			Wind Cone 8.2 M	00 29 24.1N 072 59 43.7E	
			Apron Flood light Mast NR1 12.5 M	00 29 18.1N 072 59 47.7E	
			Apron Flood light Mast NR2 12.5 M	00 29 18.0N 072 59 47.7E	
			Apron Flood light Mast NR3 12.5 M	00 29 17.9 N 072 59 47.3 E	
			Thinadoo Dhiraagu Antenna 30 M	00 31 49.7N 072 59 59.6E	
			Thinadhu VOM Antenna 40 M	00 31 47.2N 072 59 56.6E	
			NDB Antenna 24.3 M	00 29 44.80 N 072 59 42.93E	
			Control Tower 13.7 N	00 29 23. 84N 072 59 44.77E	
			Thinadhu Wataniyya Antenna 24 M	00 31 35.3 N 072 59 40.9E	

VRMT AD 2.11 Meteorological information provide

1	<i>Associated MET Office</i>	Kaadedhdhoo MET Office
2	<i>Hours of service MET Office outside hours</i>	H12 Flight operational hours
3	<i>Office responsible for TAF preparation Periods of validity</i>	National Meteorological Centre H 12
4	<i>Type of landing forecast Interval of issuance</i>	TREND on request
5	<i>Briefing/consulataion provided</i>	At NMC - Male' International Airport
6	<i>Flight documentation Language(s) used</i>	Charts, abbreviated plain language text English
7	<i>Charts and other INFO AVBL</i>	Nil
8	<i>Supplementary EQPT AVBL for INFO for briefing or consultation</i>	Nil
9	<i>ATS Units Provided with information</i>	Kaadedhdhoo TWR Male' TWR
10	<i>Additional information</i>	2 - 4 HR prior notice required

VRMT AD 2.12 Runway physical characteristics

Designation RWY NR	True & MAG BRG	Dimensions of RWY (M)	Strength (PCN) and surface of RWY and SWY	THR coordinates	THR elevation and highest elevation of TDZ of precision APP RWY
1	2	3	4	5	6
16	156° GEO 161° MAG	1220 X 30	PCN 15 Bituminous	002935.19N 0725935.93E	THR 0.61 M / 2 FT
34	336° GEO 341° MAG			002858.85N 0725951.76E	THR 0.61 M / 2 FT

Slope of RWY-SWY	SWY dimensions (M)	CWY dimensions (M)	Strip dimensions (M)	OFZ	Remarks
7	8	9	10	11	12
0%	Nil	610 X 150	1340 X 150	Nil	Nil
0%	Nil	610 X 150	1340 X 150	Nil	Nil

VRMT AD 2.13 Declared distances

RWY	TORA (M)	TODA (M)	ASDA (M)	LDA (M)	RMK
1	2	3	4	5	6
16	1220	1830	1220	1220	Nil
34	1220	1830	1220	1220	Nil

VRMT AD 2.14 Declared distances

RWY Designator	APP LGT type LEN INTST	THR LGT colour WBAR	VASIS (MEHT) PAPI	TDZ. LGT LEN	RWY Centre Line LGT Length, spacing colour, INTST	RWY edge LGT LEN. spacing colour INTST	RWY End LGT colour WBAR	SWY LGT LEN (M) colour	Remarks
1	2	3	4	5	6	7	8	9	10
16	Nil	Green -	APAPI left/3° 40FT	-	-	1220 M 58 M White , 2	Red -	Nil	Nil
34	Nil	Green -	APAPI left/3° 40FT	-	-	1220 M 58M White , 2	Red -	Nil	Nil

VRMT AD 2.15 Other lighting, secondary power supply

Nil

VRMT AD 2.16 Helicopter landing area

1	Coordinates TLOF or THR of FATO	Nil
2	TLOF and/or FATO elevation M/FT	Nil
3	TLOF and FATO area dimensions, surface, strength, marking	Nil
4	True and MAG BRG of FATO	Nil
5	Declared distance available	Nil
6	APP and FATO lighting	Nil
7	Remarks	All helicopters take-off/land from/on RWY

VRMT AD 2.17 ATS airspace

1	<i>Designation and lateral limits</i>	KAADEDHDHOO CTR A circle, radius 20 NM centred at 002944.80N 0725942.93E (NDB)
2	<i>Vertical limits</i>	SFC to 8 500 FT
3	<i>Airspace classification</i>	D
4	<i>ATS unit Language(s)</i>	Kaadedhdhoo Tower English
5	<i>Transition altitude</i>	11 000 FT MSL
6	<i>Remarks</i>	Nil

VRMT AD 2.18 ATS communication facilities

<i>Service Designation</i>	<i>Call sign</i>	<i>Frequency</i>	<i>Hours of operation</i>	<i>Remarks</i>
1	2	4	5	7
TWR	Kaadedhdhoo Tower	119.4 MHZ	HO	Nil

VRMT AD 2.19 Radio navigation and landing aids

<i>Type of aid, CAT of ILS/MLS (For VOR/ILS/MLS, give VAR)</i>	<i>ID</i>	<i>Frequency</i>	<i>Hours of operation</i>	<i>Site of transmitting antenna coordinates</i>	<i>Elevation of DME transmitting antenna</i>	<i>Remarks</i>
1	2	4	5	6	7	8
NDB (4.8° W, 1995)	KA	274 KHz	H24	002944.80N 0725942.93E	Nil	Nil

VRMT AD 2.20 Local traffic regulations

Nil

VRMT AD 2.21 Noise abatement procedures

Nil

VRMT AD 2.22 Flight Procedures

Nil

VRMT AD 2.23 Additional Information

Nil

VRMT AD 2.24 Charts related to an aerodrome

Chart	Page
Aerodrome Chart	VRMT AD 2 - 7
Instrument Approach Chart - ICAO, NDB, RWY 16	VRMT AD 2 - 9
Instrument Approach Chart - GPS, RWY 16	VRMT AD 2 - 11
Instrument Approach Chart - ICAO, NDB, RWY 34	VRMT AD 2 - 13
Instrument Approach Chart - GPS, RWY 34	VRMT AD 2 - 15

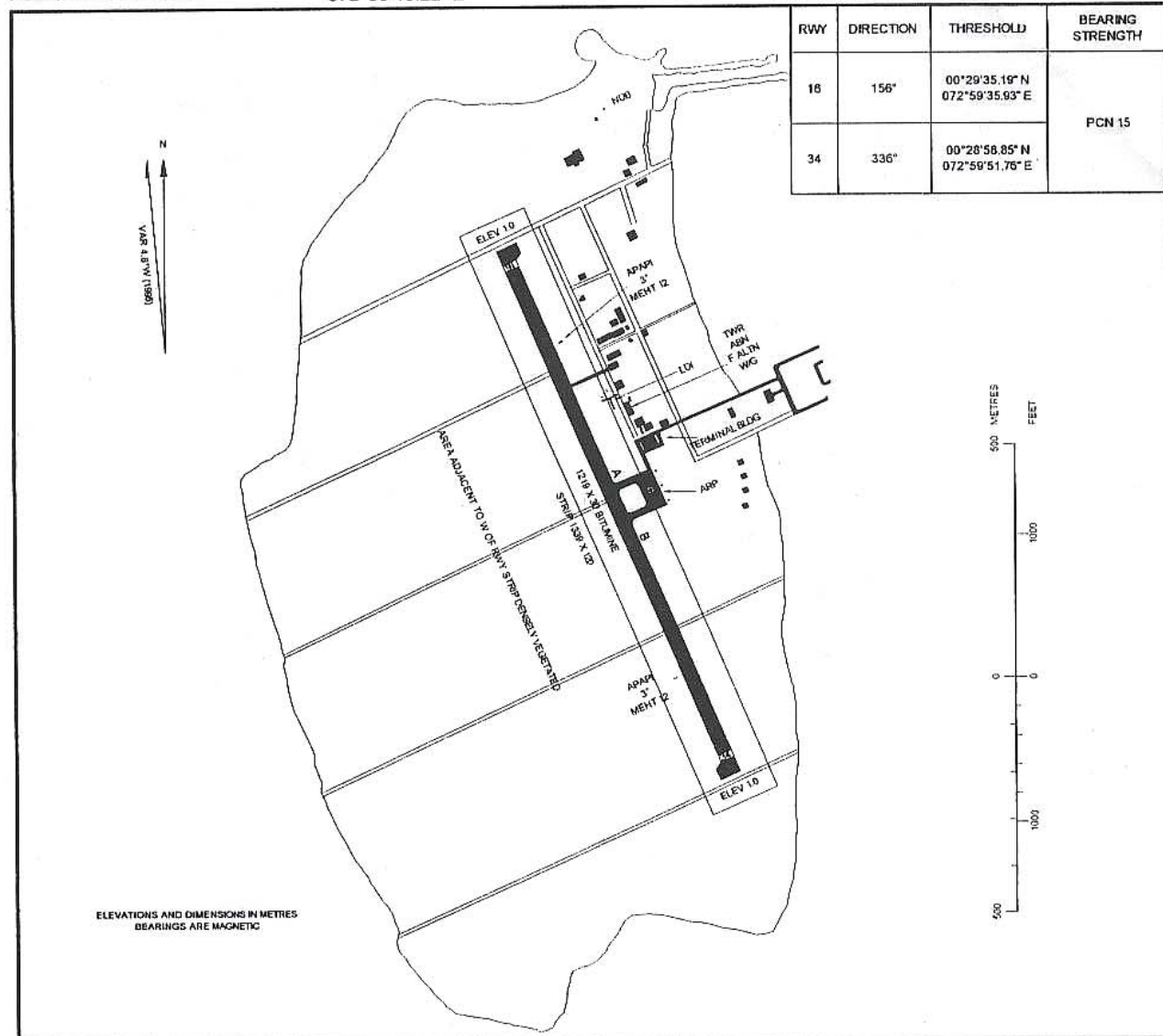
AERODROME CHART

00°29'18.23" N
072°59'46.22" E

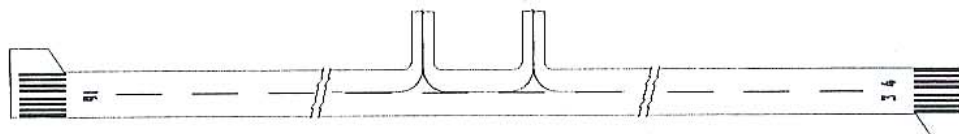
TWR 119.4

KAADEDHDHOO ISLAND / KAADEDHDHOO

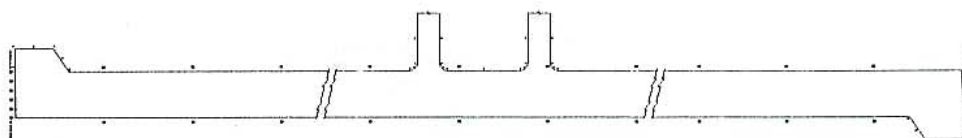
RWY	DIRECTION	THRESHOLD	BEARING STRENGTH
18	156°	00°29'35.19" N 072°59'35.93" E	PCN 15
34	336°	00°28'58.85" N 072°59'51.76" E	



MARKING AIDS RUNWAY 18/34 AND ALL TAXIWAYS



LIGHTING AIDS RUNWAY 18/34 AND ALL TAXIWAYS



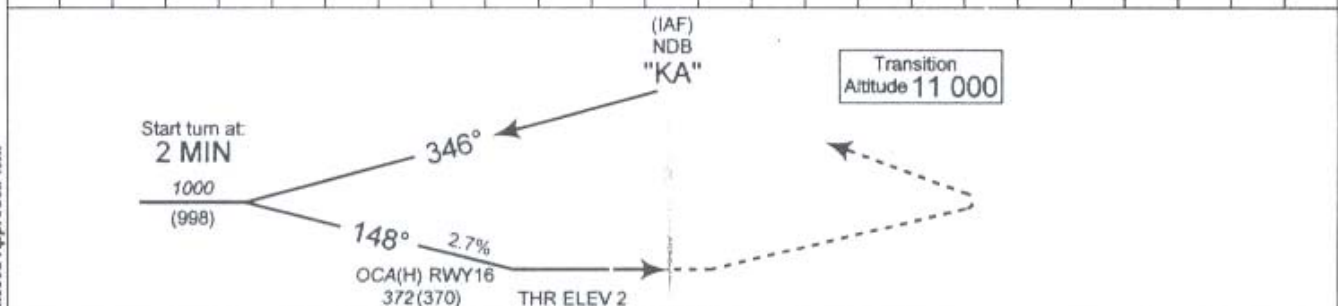
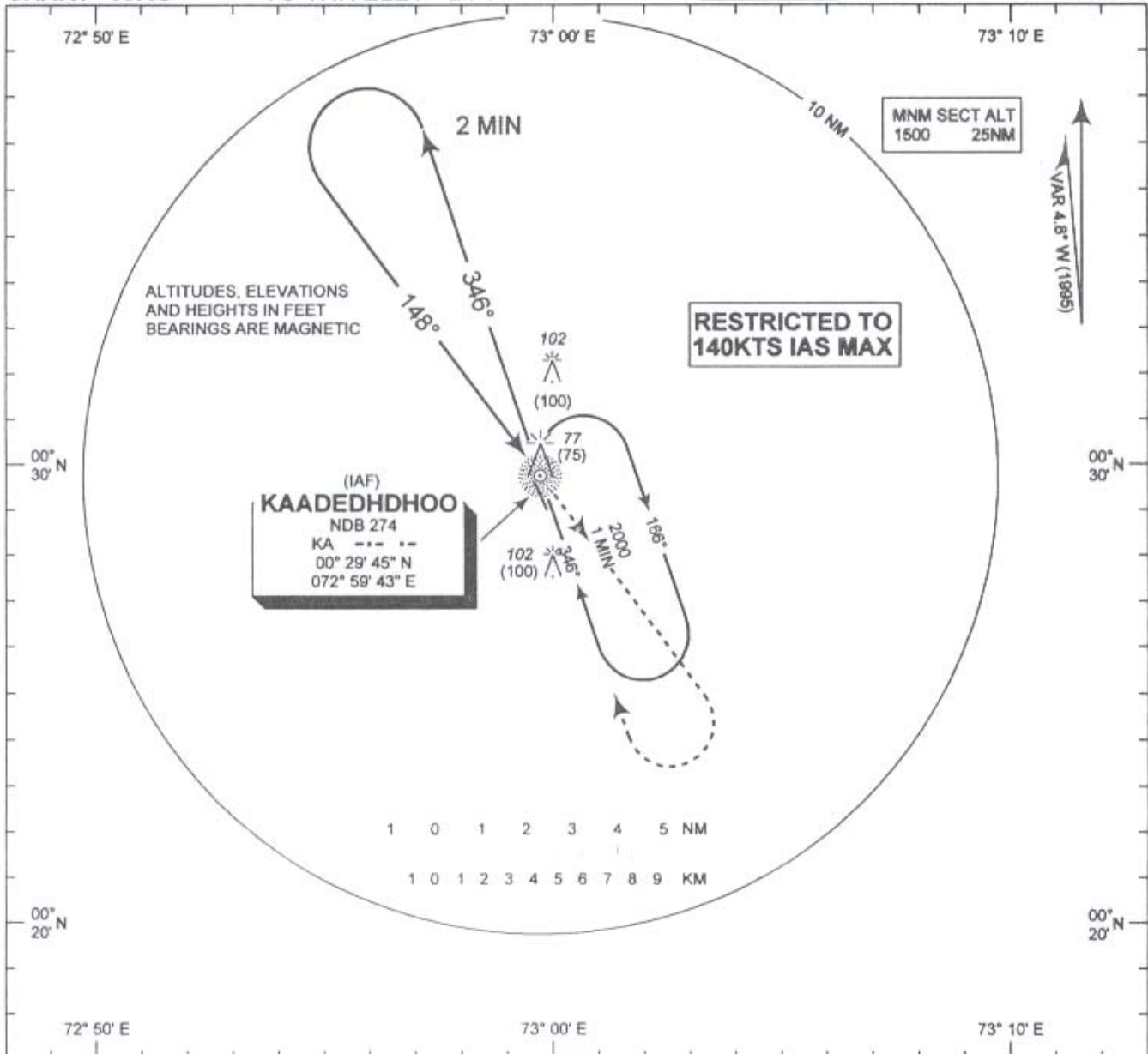
NOTE: RETRO-REFLECTIVE MARKERS USED IN LIEU OF LIGHTS ON ALL TAXIWAY AND TURNING LOOP EDGES

**INSTRUMENT
APPROACH
CHART - ICAO**

**ELEV 2 FT
HEIGHTS RELATED
TO THR ELEV - 2 FT**

**KAADEDHDHOO ISLAND / KAADEDHDHOO
NDB
RWY 16**

TWR 119.4



MISSED APPROACH: Climb straight ahead to 2000 (1998), on passing 1500 (1498) turn right to "KA" NDB.

Aircraft Category	A		B	
Straight - in	372(370)			
Circling	396(394)		494(492)	
Speed	knots	90	120	
FAP - NDB	min:sec	3:47	2:50	
Rate of descent	ft / min	250	330	

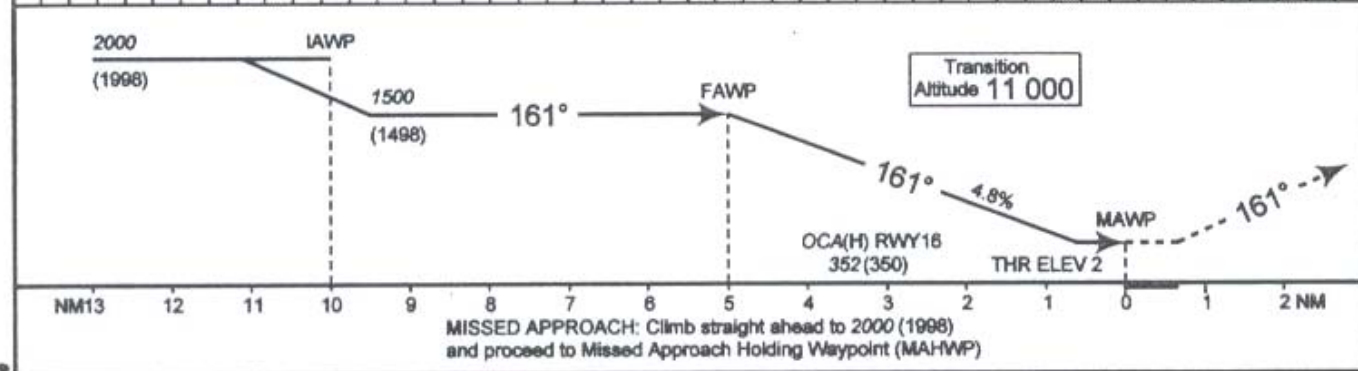
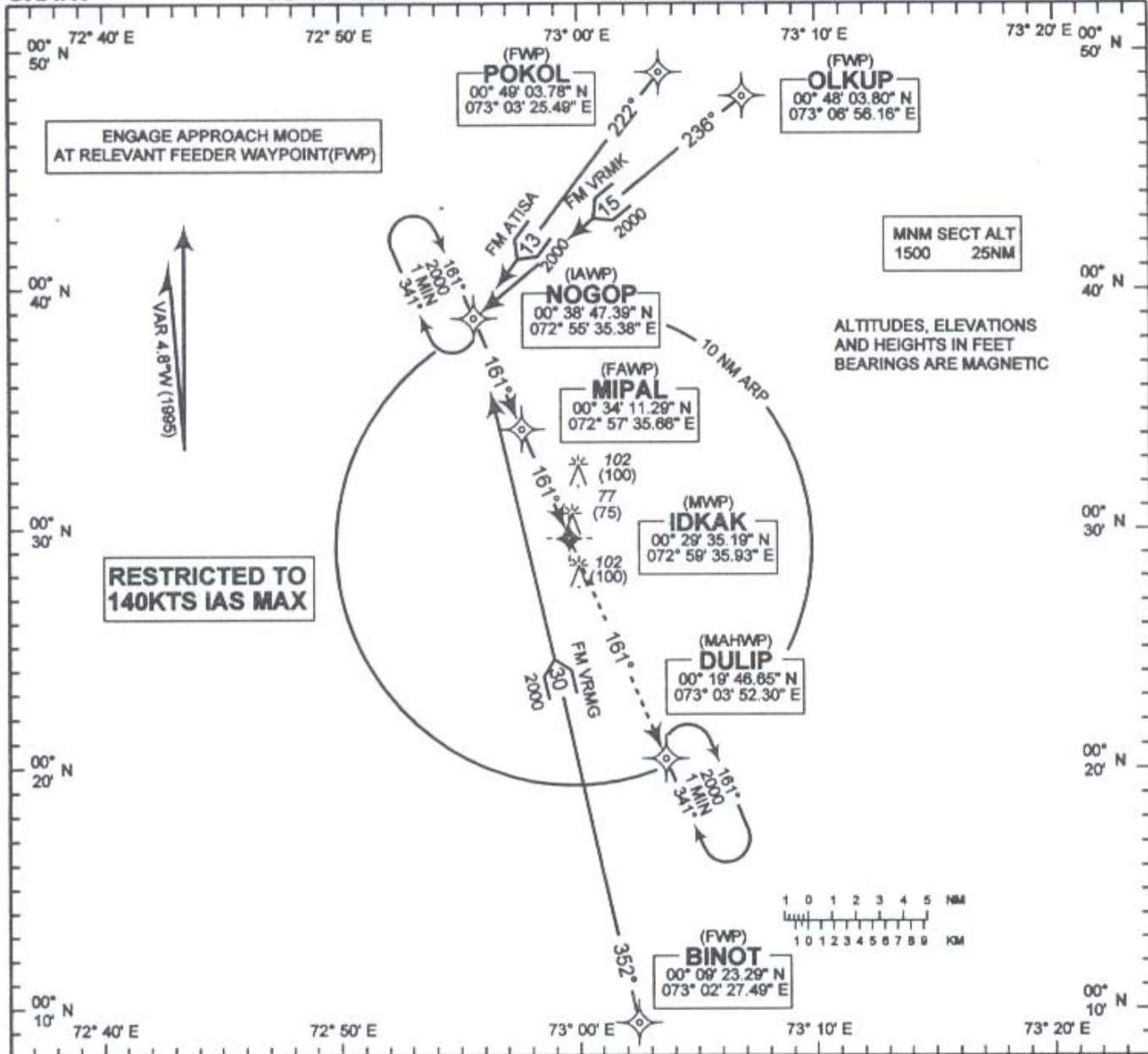
CHANGES: Transition Altitude and Missed Approach text

**INSTRUMENT
APPROACH
CHART**

**ELEV 2 FT
HEIGHTS RELATED
TO THR ELEV - 2 FT**

**KAADEDHDHOO ISLAND / KAADEDHDHOO
GPS
RWY 16**

TWR 119.4



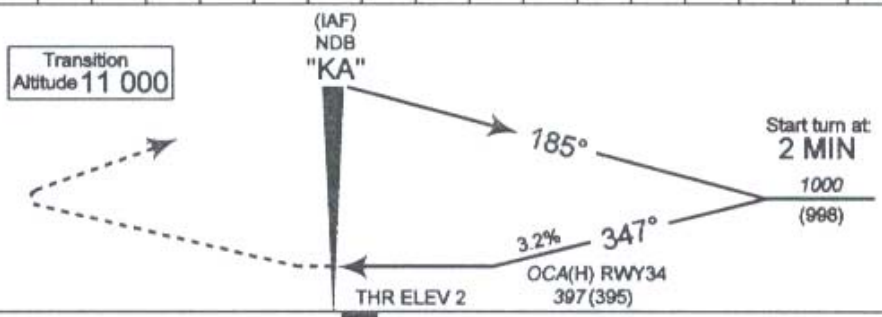
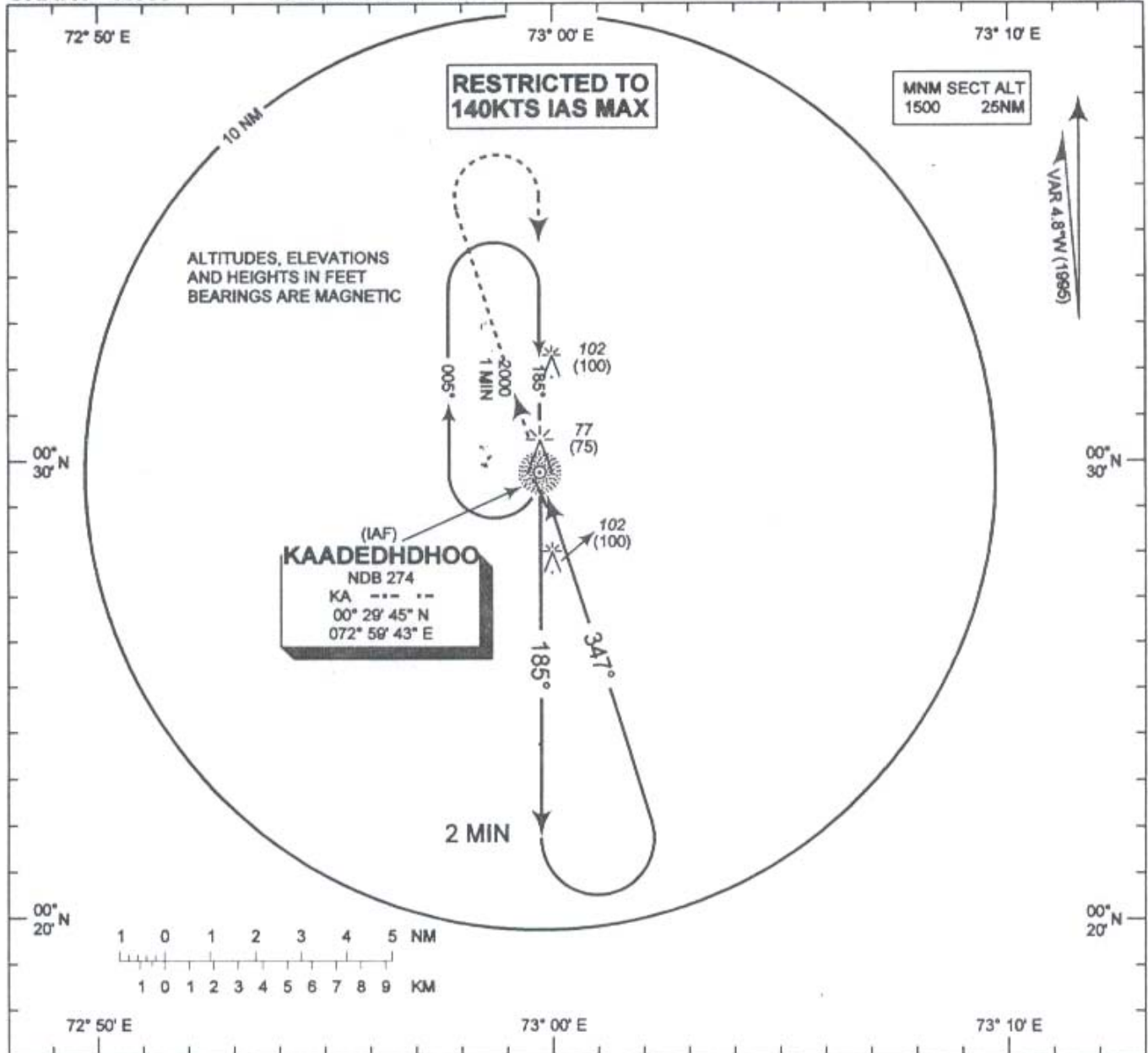
Aircraft Category		A		B	
Straight - In				352(350)	
Circling				402(400)	
Track Miles		4		3	
Advisory Altitude (Height)		1220(1218)		930(928)	
Speed		knots		120	
Rate of descent		ft / min		580	

**INSTRUMENT
APPROACH
CHART - ICAO**

**ELEV 2 FT
HEIGHTS RELATED
TO THR ELEV - 2 FT**

**KAADEDHDHOO ISLAND / KAADEDHDHOO
NDB
RWY 34**

TWR 119.1



MISSED APPROACH: Climb straight ahead to 2000 (1998),
on passing 1500 (1498) turn right to "KA" NDB.

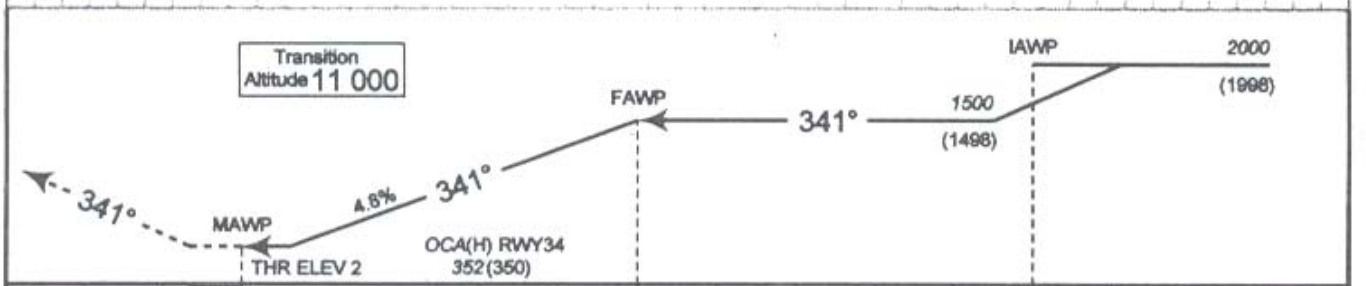
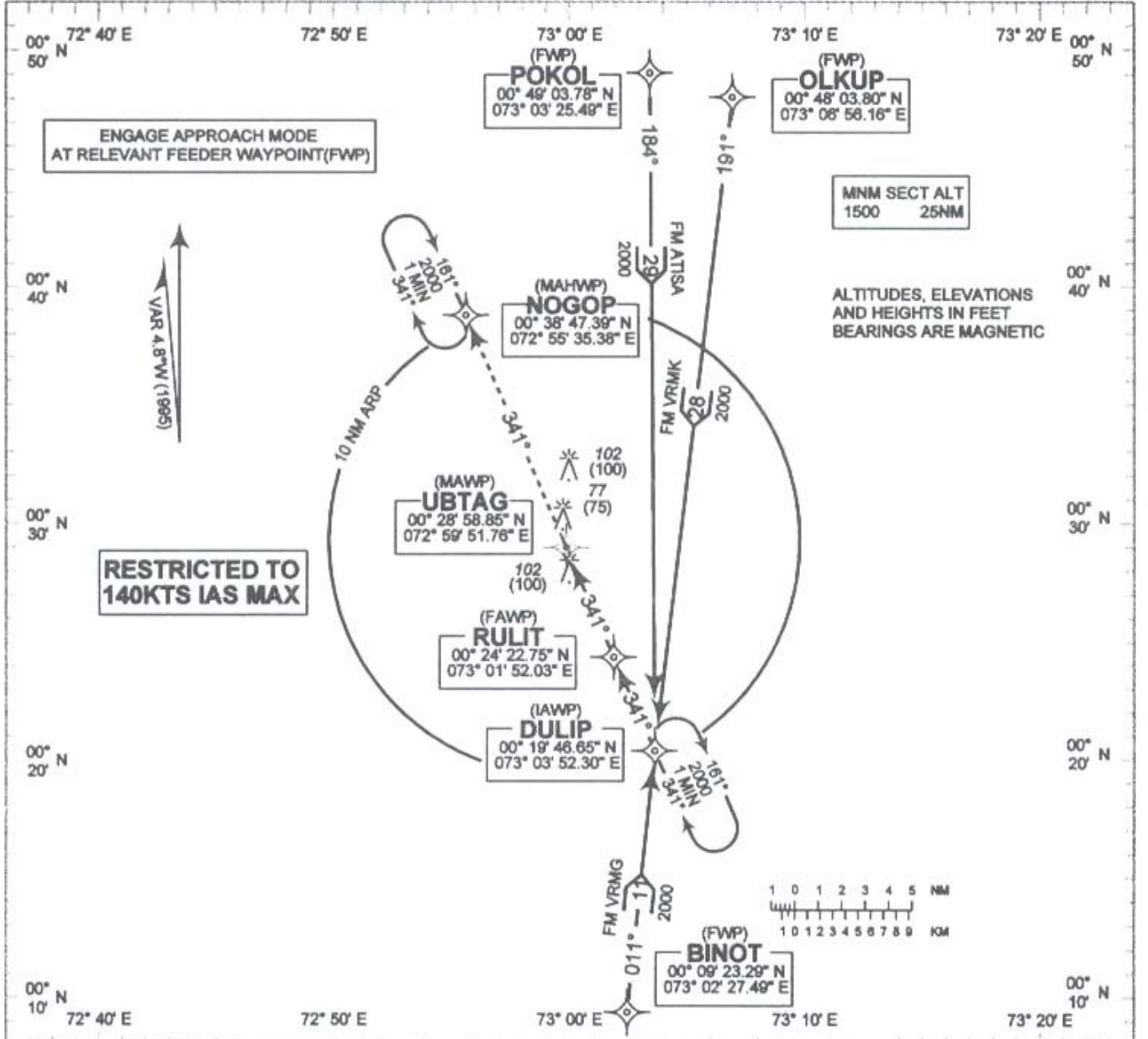
CHANGES: Transition Altitude and Missed Approach text

Aircraft Category	A		B	
Straight - In	397(395)			
Circling	397(395)		494(482)	
Speed	knots	90	120	
FAP - NDB	min:sec	3:47	2:50	
Rate of descent	ft / min	290	390	

**INSTRUMENT
APPROACH
CHART**

**ELEV 2 FT
HEIGHTS RELATED
TO THR ELEV - 2 FT**

**KAADEDHDHOO ISLAND / KAADEDHDHOO
TWR 119.4
GPS
RWY 34**



MISSED APPROACH: Climb straight ahead to 2000 (1998) and proceed to Missed Approach Holding Waypoint (MAHWP)

Aircraft Category		A		B	
Straight - In		352(350)			
Circling		402(400)			
Track Miles		4	3	2	1
Advisory Altitude (Height)		1220(1218)	930(928)	640(638)	350(348)
Speed		knots	90	120	
Rate of descent		ft / min	430	580	

CHANGES: Transition Altitude