

AD 2 AERODROMES**VRMK AD 2.1 Aerodrome location indicator and name****VRMK - KADHOO ISLAND/Kadhdhoo****VRMK AD 2.2 Aerodrome geographical and administrative data**

1	<i>ARP coordinates and site at AD</i>	015130N 0733111E Centre of apron
2	<i>Direction and distance from City</i>	217° 3.7 KM from Fonadhoo
3	<i>Elevation / Reference temperature</i>	1.2 M (4 FT) / 30.2°C
4	<i>MAG VAR/Annual change</i>	4.0° W (1995)
5	<i>AD Operator</i> <i>Address</i> <i>Telephone</i> <i>Fax</i> <i>AFS</i>	Regional Airports Ministry of Transport and Communications Republic of Maldives Tel: (960) 333 7344 Telefax: (960) 332 0911
6	<i>Types of traffic permitted (IFR/VFR)</i>	IFR / VFR
7	<i>Remarks</i>	Nil.

VRMK AD 2.3 Operational hours

1	<i>AD Operator</i>	0230 - 0930
2	<i>Customs and immigration</i>	Nil
3	<i>Health and sanitation</i>	Nil
4	<i>AIS Briefing Office</i>	Nil
5	<i>ATS Reporting Office (ARO)</i>	Nil
6	<i>MET Briefing Office</i>	Nil
7	<i>ATS</i>	HO
8	<i>Fuelling</i>	HO
9	<i>Handling</i>	Nil
10	<i>Security</i>	HO
11	<i>De-icing</i>	Not Applicable
12	<i>Remarks</i>	Aerodrome not available for night operations

VRMK AD 2.4 Handling services and facilities

1	<i>Cargo handling facilities</i>	Nil
2	<i>Fuel/oil types</i>	Jet A-1
3	<i>Fuelling facilities/capacity</i>	Fixed hose system/13000Lts
4	<i>De-icing facilities</i>	Nil
5	<i>Hanger space available for visiting aircraft</i>	Nil
6	<i>Repair facilities for visiting aircraft</i>	Nil
7	<i>Remarks</i>	Nil

VRMK AD 2.5 Passenger facilities

1	<i>Hotels</i>	Nil
2	<i>Restaurants</i>	At AD
3	<i>Transportation</i>	Launches and Dhonis, Tais and Van can be hired from airport
4	<i>Medical facilities</i>	First Aid at AD - Nil
5	<i>Bank/Post</i>	Nil
6	<i>Tourist Office</i>	Nil
7	<i>Remarks</i>	Nil

VRMK AD 2.6 Rescue and fire fighting services

1	<i>AD category for fire fighting</i>	CAT 4
2	<i>Rescue equipment</i>	All equipment required for CAT 4 available
3	<i>Capability for removal of disabled aircraft</i>	Nil
4	<i>Remarks</i>	Fire fighting service available; HO

VRMK AD 2.7 Seasonal availability - clearing

1	<i>Types of clearing equipment</i>	Nil
2	<i>Clearance priorities</i>	Nil
3	<i>Remarks</i>	AD service right throughout the year

VRMK AD 2.8 Aprons, taxiways and check locations data

1	<i>Apron surface and strength</i>	Surface: Bituminous Strength: PCN 15
2	<i>Taxiway width, surface and strength</i>	Width: 14.33 M Surface: Bituminous Strength: PCN 15
	<i>ACL location and elevation</i>	Location: Runway mid-point Elevation: 1.2 M / 4 FT
4	<i>VOR/INS Checkpoint</i>	VOR: Nil INS: Nil
5	<i>Remarks</i>	Nil

VRMK AD 2.9 Surface movement guidance and control system and markings

1	<i>Use of aircraft stand ID signs, TWY guide lines and visual docking/parking guidance system of aircraft stands</i>	Nil
2	<i>RWY/TWY markings and LGT</i>	RWY: Designation, Centreline and THR markings TWY: Nil
3	<i>Stop bars</i>	Nil
4	<i>Remarks</i>	Nil

VRMK AD 2.10 Aerodrome obstacles

<i>In Approach/TKOF areas</i>			<i>In circling area and at AD</i>		<i>Remarks</i>
1			2		
<i>RWY/Area affected</i>	<i>Obstacle type elevation markings / LGT</i>	<i>Coordinates</i>	<i>Obstacle type elevation markings / LGT</i>	<i>Coordinates</i>	
<i>a</i>	<i>b</i>	<i>c</i>	<i>a</i>	<i>b</i>	
			Building 4.9 M / 16 FT Nil/ Nil	015118.00N 0733103.60E	Nil
			Building 7.62 M / 25FT Nil/ Nil	015118.00N 0733105.60E	
			Building with chimney 6 M / 20 FT Nil/ Nil	015120.60N 0733104.80E	
			Building 4.6 M / 15 FT Nil/ Nil	015121.60N 0733107.80E	
			Building with antenna pole 12.2 M / 40FT Nil/ Nil	015123N 0733108.00E	
			Building 6 M / 20 FT Nil/ Nil	015126.00N 0733106.20E	
			Building with antenna mast 10.7 M / 35 FT Nil/ Nil	015127.40N 0733111.60E	
			Building 4.6 M / 15 FT Nil/ Nil	015127.40N 0733108.80E	
			Building 12 M / 40 FT Nil/ Nil	015139.40N 0733111.60E	
			Building 6 M / 20 FT Nil/ Nil	015139.40N 0733114.60E	
			Building 6 M / 20 FT Nil/ Nil	015141.80N 0733114.60E	

VRMK AD 2.11 Meteorological information provided

1	Associated MET Office	Kadhdhoo MET Office
2	Hours of service MET Office outside hours	H12 Flight operational hours
3	Office responsible for TAF preparation Periods of validity	National Meteorological Centre H 12
4	Type of landing forecast Interval of issuance	TREND on request
5	Briefing/consulataion provided	At NMC - Male' International Airport
6	Flight documentation Language(s) used	Charts, abbreviated plain language text English
7	Charts and other INFO AVBL	S, U ₈₅ , U ₅₀ , U ₂₅ , SWH, SWM, T
8	Supplementary EQPT AVBL for INFO for briefing or consultation	Telefax: (960) 6800731
9	ATS Units Provided with information	Kadhdhoo TWR Male' TWR
10	Additional information	2 - 4 hr Prior notice required

VRMK AD 2.12 Runway physical characteristics

Designation RWY NR	True & MAG BRG	Dimensions of RWY (M)	Strength (PCN) and surface of RWY and SWY	THR coordinates	THR elevation and highest elevation of TDZ of precision APP RWY
1	2	3	4	5	6
03	025° GEO 029° MAG	1220 x 30	PCN 15 Bituminous	015118.36N 0733107.77E	THR 1.2 M/ 4FT
21	205° GEO 209° MAG			015154.24N 0733124.61E	THR 1.2 M / 4FT

Slope of RWY-SWY	SWY dimensions (M)	CWY dimensions (M)	Strip dimensions (M)	OFZ	Remarks
7	8	9	10	11	12
0%	Nil	610 X 150	1340 X 150	Nil	Nil
0%	Nil	610 X 150	1340 X 150	Nil	Nil

VRMK AD 2.13 Declared distances

RWY	TORA (M)	TODA(M)	ASDA (M)	LDA (M)	RMK
1	2	3	4	5	6
03	1220	1830	1220	1220	Nil
21	1220	1830	1220	1220	Nil

VRMK AD 2.14 Approach and Runway lighting

RWY Designator	APP LGT type LEN INTST	THR LGTcolour WBAR	VASIS (MEHT) PAPI	TDZ LGT LEN	RWY Centre Line LGT Length spacing colour INTST	RWY edge LGT LEN spacing colour INTST	RWY End LGT colour WBAR	SWY LGT LEN (M) colour	Remarks
1	2	3	4	5	6	7	8	9	10
03	Nil	Green yes	APAPI left/3° 40FT	-	-	1220M 58M White,5	Red -	Nil	Nil
21	Nil	Green yes	APAPI left/3° 40FT	-	-	1220M 58M White,5	Red	Nil	Nil

VRMK AD 2.15 Other lighting, secondary power supply

1	ABN/IBN location, characteristics and hours of operation	ABN: At Control Tower ALTN W/G EV 5 SEC/IBN:Nil HN
2	LDI location and LGT Anemometer location and LGT	LDI: Nil Anemometer: On top of Control Tower: Nil
3	TWY edge and centre line lighting	Nil
4	Secondary power supply/ swith-overtime	Secondary power supply to RWY lighting /7 seconds
5	Remarks	Nil

VRMK AD 2.16 Helicopter landing area

1	Coordinates TLOF or THR of FATO	Nil
2	TLOF and/or FATO elevation M/FT	Nil
3	TLOF and FATO area dimensions, surface, strength, marking	Nil
4	True and MAG BRG of FATO	Nil
5	Declared distance available	Nil
6	APP and FATO lighting	Nil
7	Remarks	All helicopters take-off/land from/on RWY

VRMK AD 2.17 ATS airspace

1	Designation and lateral limits	KADHDHOO CTR A circle, radius 20 NM centred at 015116.00N 0733114.90E (NDB)
2	Vertical limits	SFC to 8 500 FT
3	Airspace classification	D
4	ATS unit Language(s)	KADHDHOO Tower English
5	Transition altitude	11 000 FT MSL
6	Remarks	Nil

VRMK AD 2.18 ATS communication facilities

<i>Service Designation</i>	<i>Call sign</i>	<i>Frequency</i>	<i>Hours of operation</i>	<i>Remarks</i>
1	2	4	5	6
TWR	Kadhdhoo Tower	119.6 MHZ	As AD	Primary frequency

VRMK AD 2.19 Radio navigation and landing aids

<i>Type of aid, CAT of ILS/MLS (For VOR/ILS/MLS, give VAR)</i>	<i>ID</i>	<i>Frequency</i>	<i>Hours of operation</i>	<i>Site of transmitting antenna coordinates</i>	<i>Elevation of DME transmitting antenna</i>	<i>Remarks</i>
1	2	4	5	6	7	8
NDB (4° W, 1995)	KD	260 KHz	H24	015116.00N 0733114.90E	Nil	Nil

VRMK AD 2.20 Local traffic regulations

Nil

VRMK AD 2.21 Noise abatement procedures

Nil

VRMK AD 2.22 Flight Procedures

Nil

VRMK AD 2.23 Additional Information

Concentration of birds at Kadhdhoo airport , on and around runway 03/21 are expected. All pilots are advised to exercise caution.

VRMK AD 2.24 Charts related tp an aerodrome

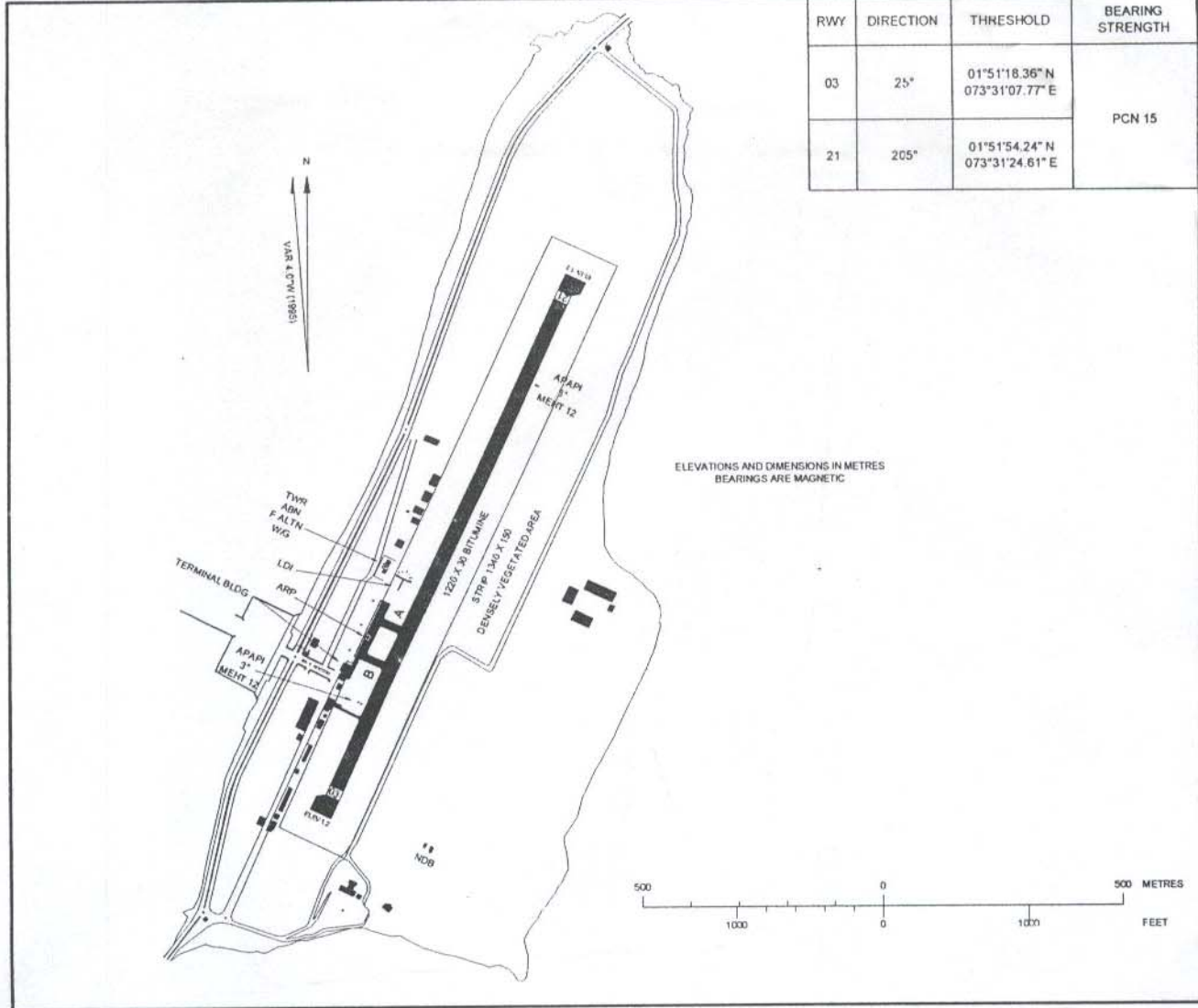
Chart	Page
Instrument Approach Chart - ICAO, NDB, RWY 03	VRMK AD 2 - 7
Instrument Approach Chart - GPS, RWY 03	VRMK AD 2 - 9
Instrument Approach Chart - ICAO, NDB, RWY 21	VRMK AD 2 - 11
Instrument Approach Chart - GPS, RWY 21	VRMK AD 2 - 13

AERODROME CHART
01°51'30.04" N
073°31'10.74" E

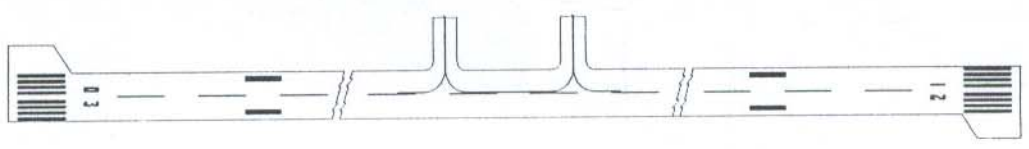
TWR 119.6

KADHDHOO ISLAND / KADHDHOO

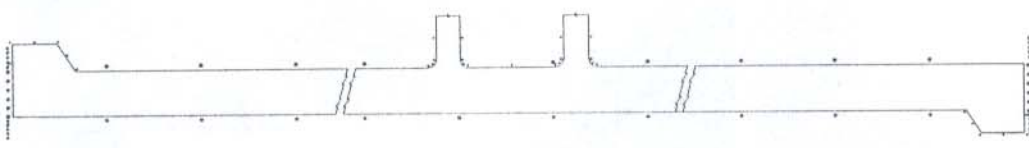
RWY	DIRECTION	THRESHOLD	BEARING STRENGTH
03	25°	01°51'18.36" N 073°31'07.77" E	PCN 15
21	205°	01°51'54.24" N 073°31'24.61" E	



MARKING AIDS RUNWAY 03/21 AND ALL TAXIWAYS



LIGHTING AIDS RUNWAY 03/21 AND ALL TAXIWAYS

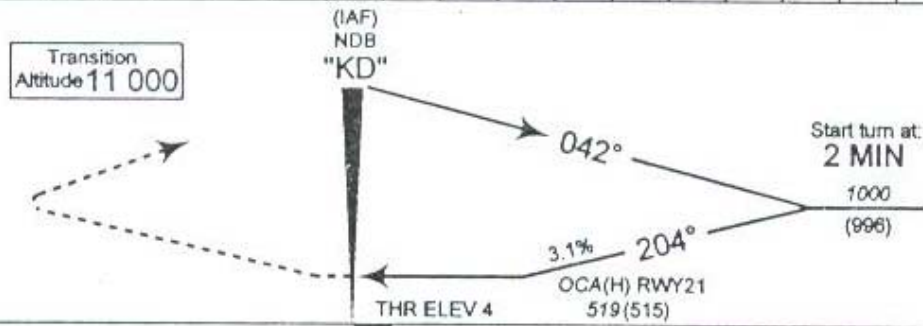
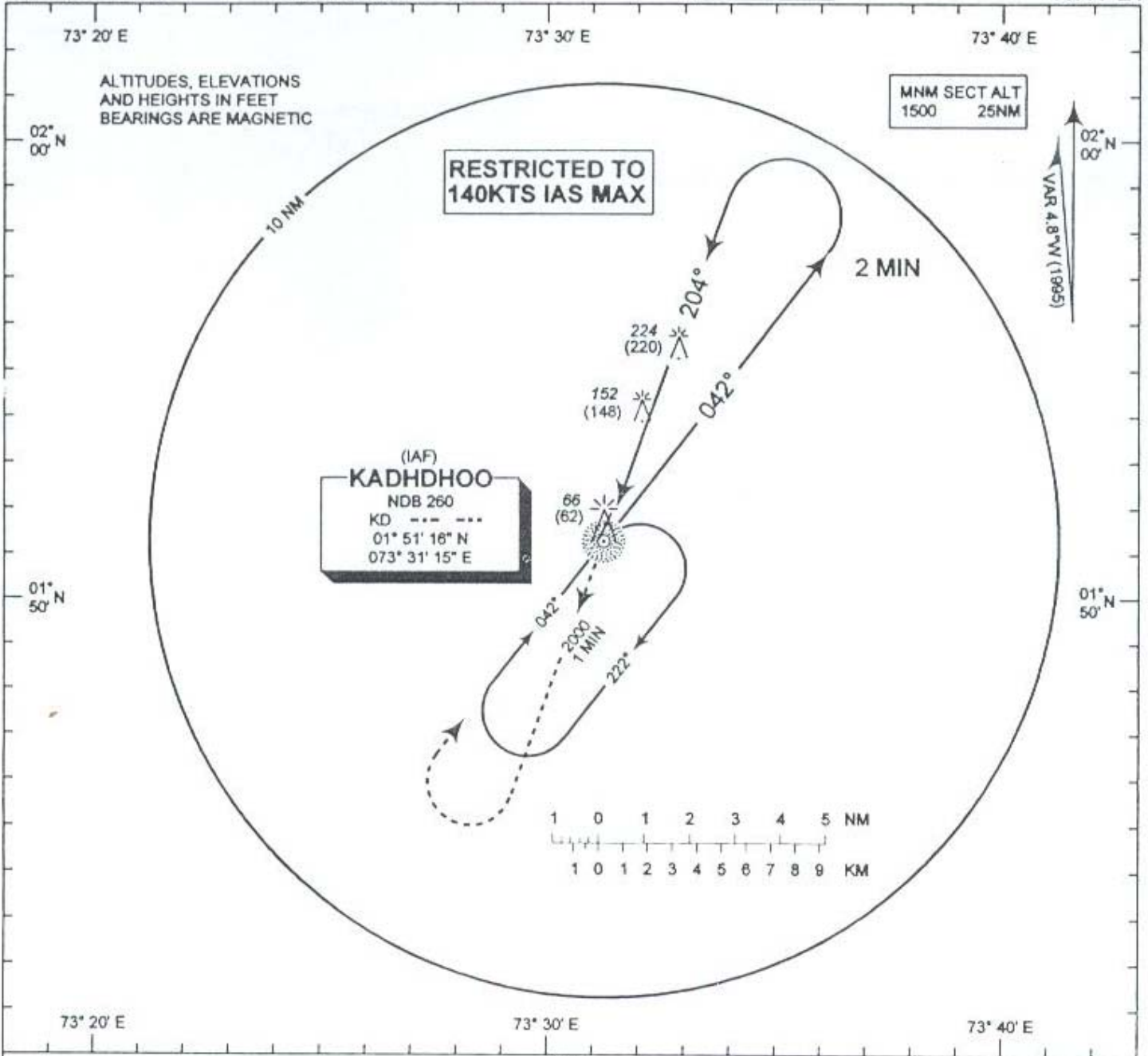


NOTE - RETRO - REFLECTIVE MARKERS USED IN LIEU OF LIGHTS ON ALL TAXIWAY AND TURNING LOOP EDGES

INSTRUMENT
APPROACH
CHART - ICAO

ELEV 4 FT
HEIGHTS RELATED
TO THR ELEV - 4 FT

KADHDHOO ISLAND / KADHDHOO
NDB
RWY 21
TWR 119.6



MISSED APPROACH: Climb straight ahead to 2000 (1996),
on passing 1500 (1496) turn right to "KD" NDB.

Aircraft Category		A	B
Straight - In		519(515)	
Circling		519(515)	
Speed	knots	90	120
FAP - NDB	min:sec	3:47	2:50
Rate of descent	ft / min	280	380

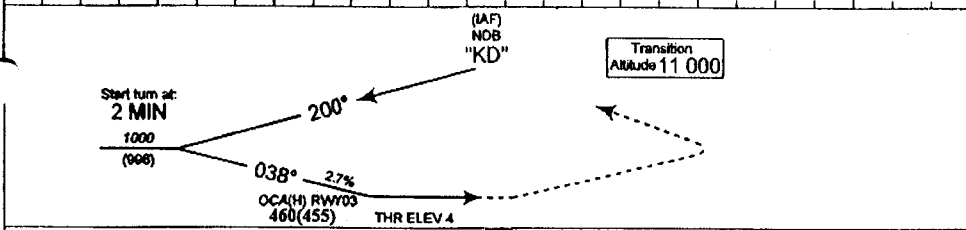
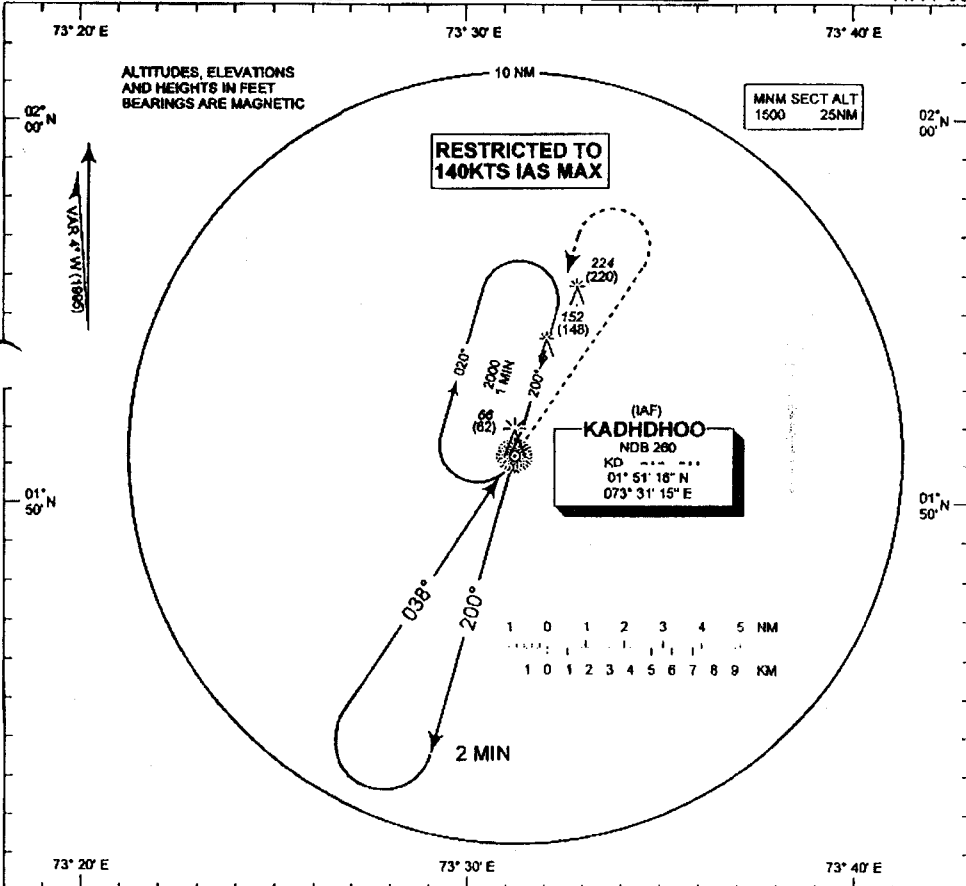
CHANGES: Transition Altitude and Missed Approach text

**INSTRUMENT
APPROACH
CHART - ICAO**

**ELEV 4 FT
HEIGHTS RELATED
TO THR ELEV - 4 FT**

**KADHDHOO ISLAND / KADHDHOO
NDB
RWY 03**

TWR 119.6



MISSED APPROACH: Climb straight ahead to 2000 (1998), on passing 1500 (1498) turn left to "KD" NDB.

Aircraft Category		A		B	
Straight-in		460(455)			
Circling		399(394)		496(492)	
Speed	knots	90		120	
FAP - NDB	min:sec	3.47		2.50	
Rate of descent	ft / min	250		330	

Chartlet: Transition Altitude