

Tel: 324985
324992
E-mail: civav@aviainfo
.gov.mv
FAX: (960) 323039

REPUBLIC OF MALDIVES
AERONAUTICAL INFORMATION SERVICE
CIVIL AVIATION DEPARTMENT
MINISTRY OF TRANSPORT AND CIVIL AVIATION

AIC
02/04
15 JAN 04

PA Complex
Male' 20307
Republic of Maldives

1- VFR FLOAT PLANE ARRIVAL AND DEPARTURE ROUTE
MAPS

1.1 Introduction

This AIC is to introduce the attached VFR Float plane arrival and departure route maps.

The purpose of these established VFR arrival and departure routes are to ensure safe and orderly flow of traffic and to minimise occurrences and incidents of potentially unsafe nature. This would also enable less use of radio frequency.

VFR standard departure and arrival route clearances will be issued by ATC for separation purposes.

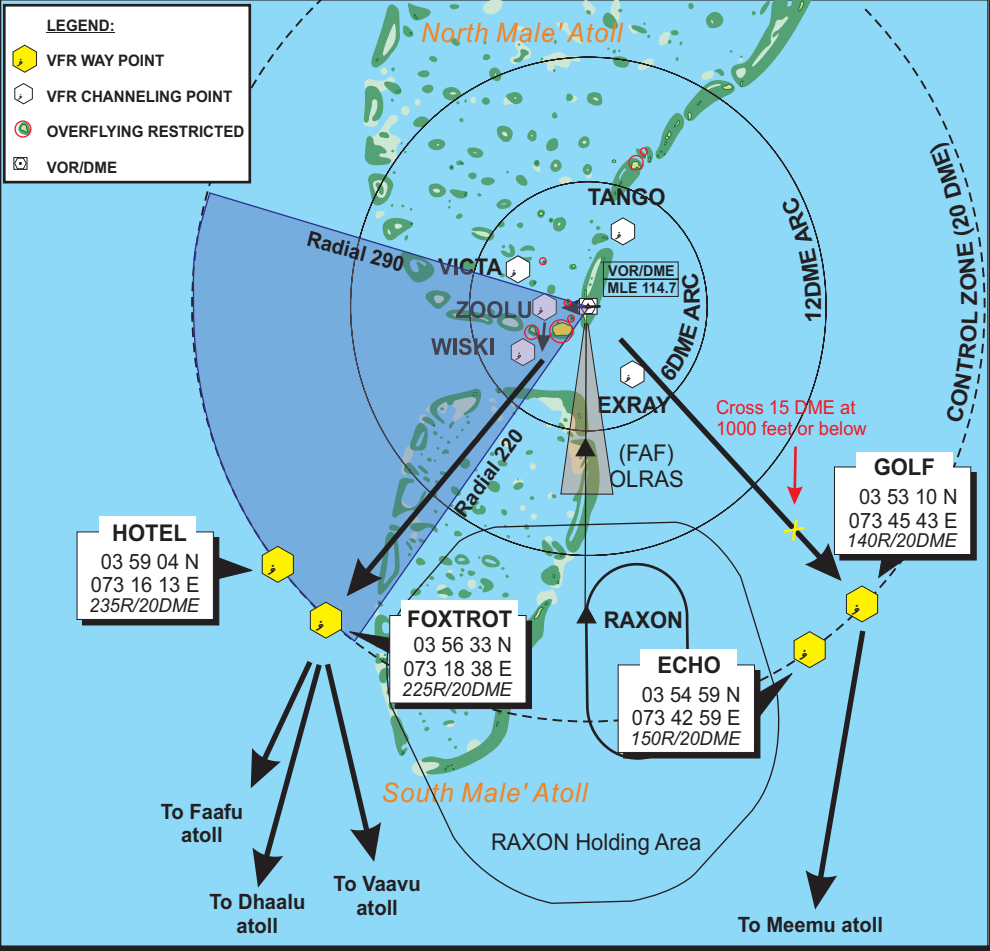
It is important that the pilot-in command follow the clearances issued to VFR traffic and report at the reporting points in order to make this system work effectively.

1.2 Effective Date

This AIC becomes effective on 15th January 2004.

Mahmood Razee
DIRECTOR GENERAL OF CIVIL AVIATION

RWY 36 ACTIVE FLOATPLANE DEPARTURES	ATIS	GROUND	TOWER	CONTROL
		121.6	118.1	119.7



FELIDHOO OVERHEAD DEPARTURE:
Depart north or eastbound, turn right (if northbound) or turn left (if eastbound) and cross midfield at 2500 feet and proceed direct to ZOOLU then turn left and establish on 225 radial within 4 DME and proceed to FOXTROT. Cross FOXTROT not above 4500 feet and then climb to cleared altitude and proceed direct to destination.
(Follow any additional altitude restrictions ATC may have)

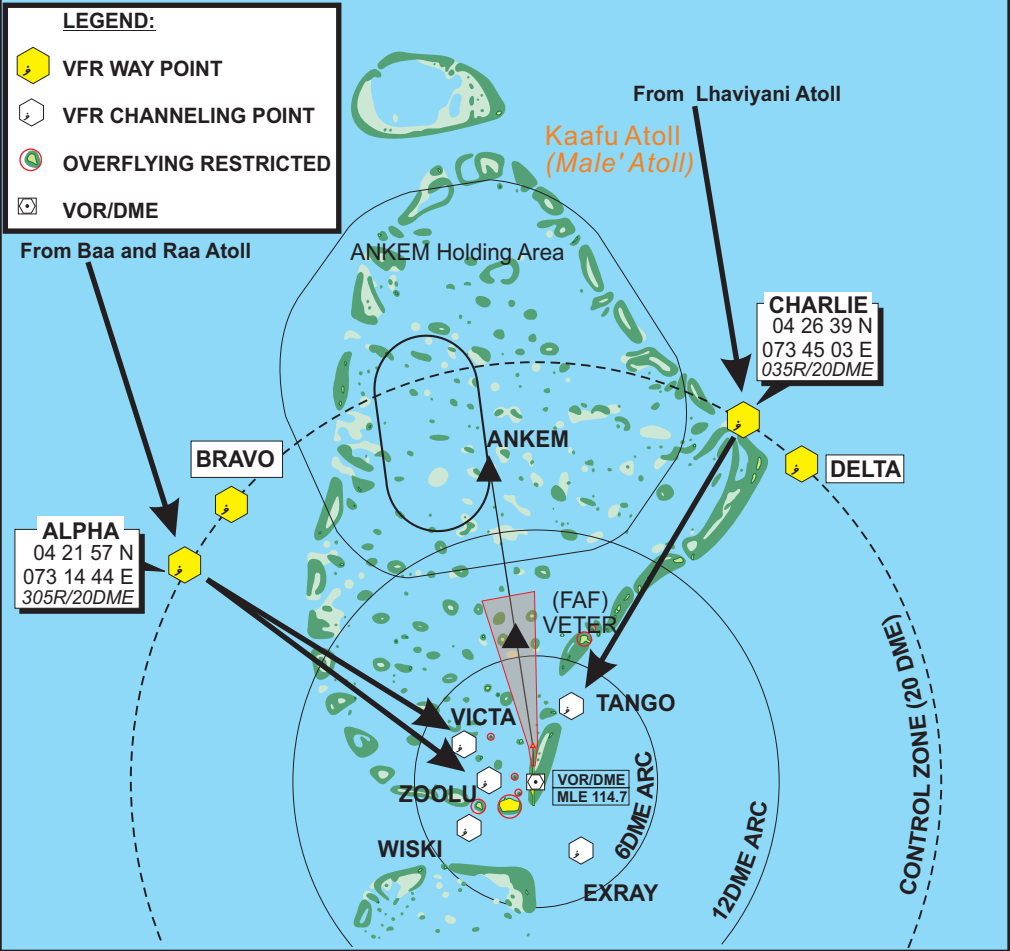
MEEMU DEPARTURE:
Depart north or eastbound, turn right and establish on 140 radial within 4 DME and proceed to GOLF. Cross 15 DME not above 1000 feet and then climb to cleared altitude and proceed direct to destination.
(Follow any additional altitude restrictions ATC may have)

CAUTION:
Watch for IFR traffic holding over RAXON and executing VOR ILS approach to RWY36. Traffic executing VOR ILS approach are required to be at 2000 feet when they start the base turn at 10 DME on radial 155.

NOTE:
Traffic information within CTR between Visual Arrivals/Departures will be provided on a workload permitting basis.

RWY 18 ACTIVE FLOATPLANE ARRIVALS

ATIS	GROUND	TOWER	CONTROL
	121.6	118.1	119.7



LHAVIYANI ARRIVAL:
After departure from Lhaviyani atoll climb to 5500 feet (*contact Male' Control for higher*), track direct to CHARLIE and then direct to TANGO. Arrange to be over TANGO at 500 feet and proceed to land as instructed.

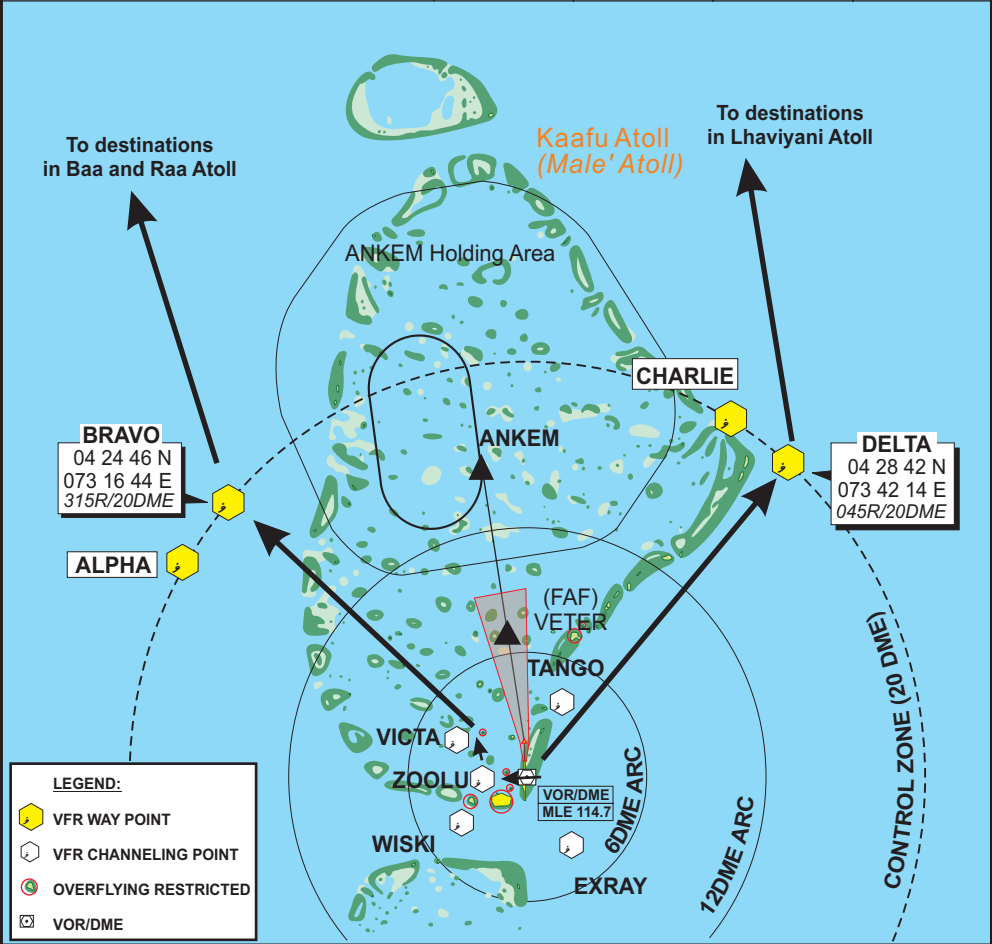
MAALHOS ARRIVAL:
After departure from RAA/BAA atoll climb to 5500 feet (*contact Male' Control for higher*), track direct to ALPHA and then direct to VICTA. Arrange to be over VICTA at 500 feet and proceed to land as instructed.

MAALHOS OVERHEAD ARRIVAL:
After departure from RAA/BAA atoll climb to 5500 feet (*contact Male' Control for higher*), track direct to ALPHA and then direct to ZOO LU. Arrange to be over ZOO LU at 2000 feet. Cross midfield at 2000 feet and proceed to land as instructed.

CAUTION:
Watch for IFR traffic holding over ANKEM and traffic on radial 326 executing VOR approach to RWY18. Traffic on radial 326 executing VOR DME approach are required to be at 2000 feet when they turn on to final from the 12 DME ARC.

NOTE:
Traffic information within CTR between Visual Arrivals/Departures will be provided on a workload permitting basis.

RWY 18 ACTIVE FLOATPLANE DEPARTURES	ATIS	GROUND	TOWER	CONTROL
		121.6	118.1	119.7



MAALHOS OVERHEAD DEPARTURE:

Depart southbound or eastbound, turn left and cross midfield at 2500 feet and proceed direct to ZOO LU then turn right and establish on 315 radial within 4DME and proceed to BRAVO and then direct to destination.
(Follow any altitude restrictions ATC may have)

LHAVIYANI DEPARTURE:

Depart southbound or eastbound, turn left and establish on 045 radial within 4DME. Cross abeam TANGO at or above 1000 feet. and proceed to DELTA and then direct to destination.
(Follow any altitude restrictions ATC may have)

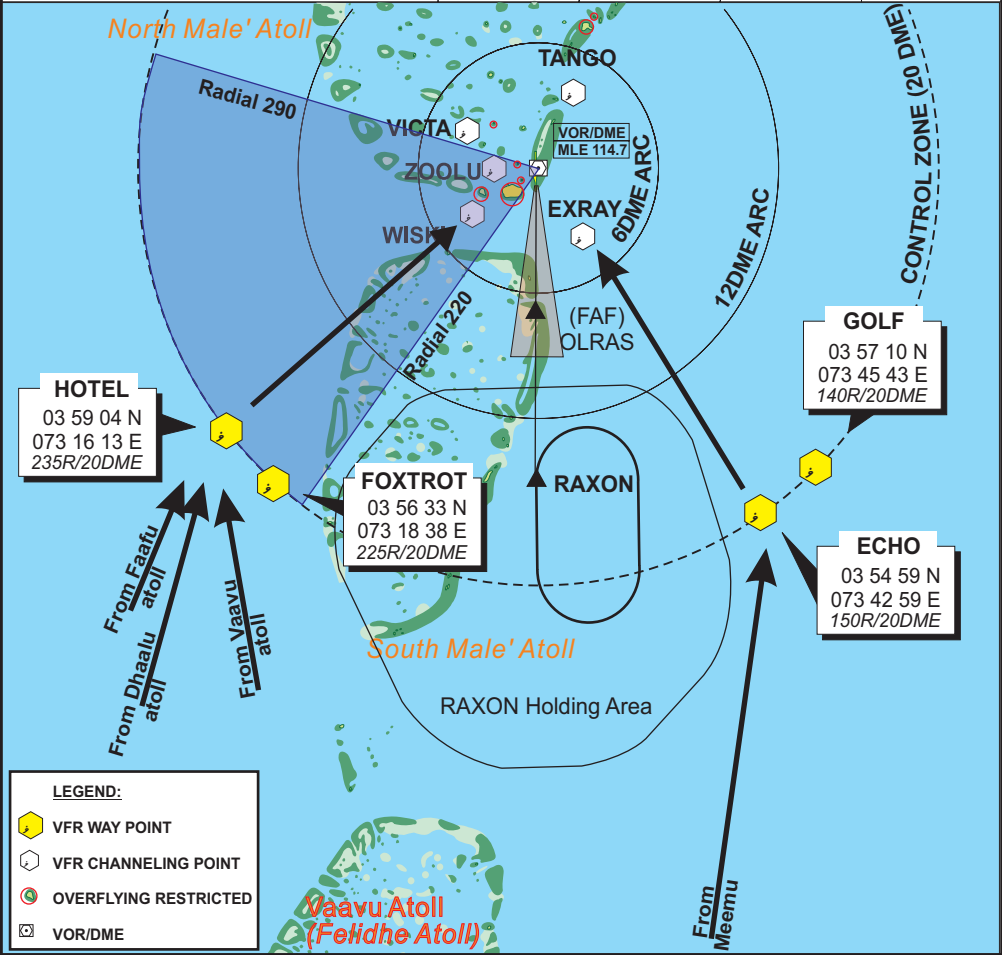
CAUTION:

Watch for IFR traffic holding over ANKEM and traffic on radial 326 executing VOR approach to RWY18. Traffic on radial 326 executing VOR DME approach are required to be at 2000 feet when they turn on to final from the 12 DME ARC.

NOTE:

Traffic information within CTR between Visual Arrivals/Departures will be provided on a workload permitting basis.

RWY 36 ACTIVE FLOATPLANE ARRIVALS	ATIS	GROUND	TOWER	CONTROL
		121.6	118.1	119.7



FELIDHOO ARRIVAL

After departure from Faafu, Dhaalu or Vaavu atoll, climb to desired altitude (if climbing above 5500 feet co-ordinate with ATC) and proceed direct to HOTEL. to cross HOTEL at 3500 feet and then direct to WISKI. Arrange to be over WISKI at 500 feet and proceed to land as directed.

(Follow any additional altitude restrictions ATC may have)

MEEMU ARRIVAL

After departure from Meemu atoll, climb to desired altitude (if climbing above 5500 feet co-ordinate with ATC) and proceed direct to ECHO, to cross ECHO at 1000 feet and then direct to EXRAY. Arrange to be over EXRAY at 500 feet and proceed to land as directed.

(Follow any additional altitude restrictions ATC may have)

CAUTION:

Watch for IFR traffic holding over RAXON and executing VOR ILS approach to RWY36. Traffic executing VOR ILS approach are required to be at 2000 feet when they start the base turn at 10 DME on radial 155.

NOTE:

Traffic information within CTR between Visual Arrivals/Departures will be provided on a workload permitting basis.